



Strategia per  
lo sviluppo sostenibile  
**REGIONE PUGLIA**



# VOLUNTARY LOCAL REVIEW 2022

Puglia Region  
Metropolitan City of Bari





## INTRODUCTION

The programmatic and strategic document "Transforming our world: the 2030 Agenda for Sustainable Development", better known as the 2030 Agenda, was adopted on the 25th of September 2015 by the heads of state and government of 193 countries during a special summit of the United Nations. It sets 17 goals (SDGs) and 169 sub-goals for the achievement of which the logic is based on a multilevel dimension.

Italy approved with CIPE Resolution no. 108/2017 the National Sustainable Development Strategy (SNSvS), in order to move from a sectoral governance approach to an integrated approach based on the three dimensions of sustainability (economic, social, environmental).

Consistently with national provisions (Legislative Decree 152/2006), the Puglia Region has started the process of building its Regional Sustainable Development Strategy (RSvS), indicating the regional Department of Mobility, Urban Quality, Public Works, Ecology and Landscape, as the person in charge of defining the RSvS (ref. n. MATTM n. 2802/2018).

The project of constructing Puglia's RSvS benefits from the following support and confrontation initiatives *promoted* by the central government:

- collaboration agreements with which the MATTM supports, also financially, the construction process of the Regional Strategy (Agreement pursuant to Article 15 of Law 241/90 and subsequent amendments between the Ministry of the Environment and the Puglia Region for collaboration activities to support the fulfilment of the obligations provided for by art. 34 of Legislative Decree n.152 / 2006 and subsequent amendments in relation to the implementation of the Regional Strategies for Sustainable Development - ref. n.12540 of 21/12/2018 and ref. n. 40094 of 29/05/2020);
- support within the line of action supported by the PON Governance and Institutional Capacity 2014/2020 devoted to the issue of improving the efficiency of the public administration - We create PA (Line of intervention L2 WPI).

Document by the Department of Environment, Landscape and Urban Quality - Puglia Region  
**Coordination structure of the Regional Sustainable Development Strategy**

Ing. Paolo Garofoli - Department Director

Dr. Serena Scorrano - official

Dr. Claudia De Robertis - official

Dr. Alessio Quintieri - official

With the support of the **IPRES Foundation - Apulian Institute of Economic and Social Research**



# Table of contents

INTRODUCTION..... 2

Territorial framework ..... 4

Governance of implementation and monitoring..... 5

Territorial strategy and policy coherence.....10

Participation and promotion of a culture for sustainability .....14

    Sustainability education .....15

Metropolitan Agenda City Bari .....17

    Management and governance methods .....17

    Coherence with public policies.....17

    Civil company investment.....18

Attachment n. 1 .....20

Attachment n. 2 .....25

List of attachments

*Attachment n. 1 – Regional Sustainable Development Objectives*

*Attachment n. 2 – Puglia positioning tables - adj. September 2021*

# 1

## Territorial framework

The territorial classification refers to data sourced by Istat (National Institute of Statistics), last updated in August-September 2021 and to the annual report "Territories and sustainable development goals" published by the Italian Alliance for Sustainable Development (ASviS) in December 2020.

Istat periodically updates the list and values of indicators "identical" or "similar" to those defined at the international level by the 2030 Agenda working group, integrating them with other "context" ones, linked to specific territorial actions.

In the annual report, the ASviS processes Istat data, producing the regional analysis of a composite indicator for each SDG, built with the same methodology adopted by Istat for the analogue composites of the Equitable and Sustainable Well-being (SWB/BES)<sup>1</sup> framework. Furthermore, in 2020, the ASviS proposed 22 target indicators quantified by 2030, selected according to certain criteria, and evaluated in terms of distance from the current 22 values. The Statistical Office of the Puglia Region processes the Istat data and makes the trends over time of the individual Apulian indicators available on the official website, comparing them with the national and Southern ones <https://www.regione.puglia.it/web/ufficio-statistics/activities-and-reports/goal-agenda-2030>. The office has published the following updates so far: July 2019, January 2020, June 2021, March 2021, August-September 2021.

In Appendix 1 of the document the values of these indicators for Puglia, Southern Italy and Italy referring to the year of the last update are shown by the tabs. 1-17. The green colour highlights a favourable positioning for Puglia with respect to Southern Italy and Italy, considering the direction of the indicator's polarity. The updated Apulian data is then compared with that of the previous year and is green-coloured if the indicator shows an improvement.

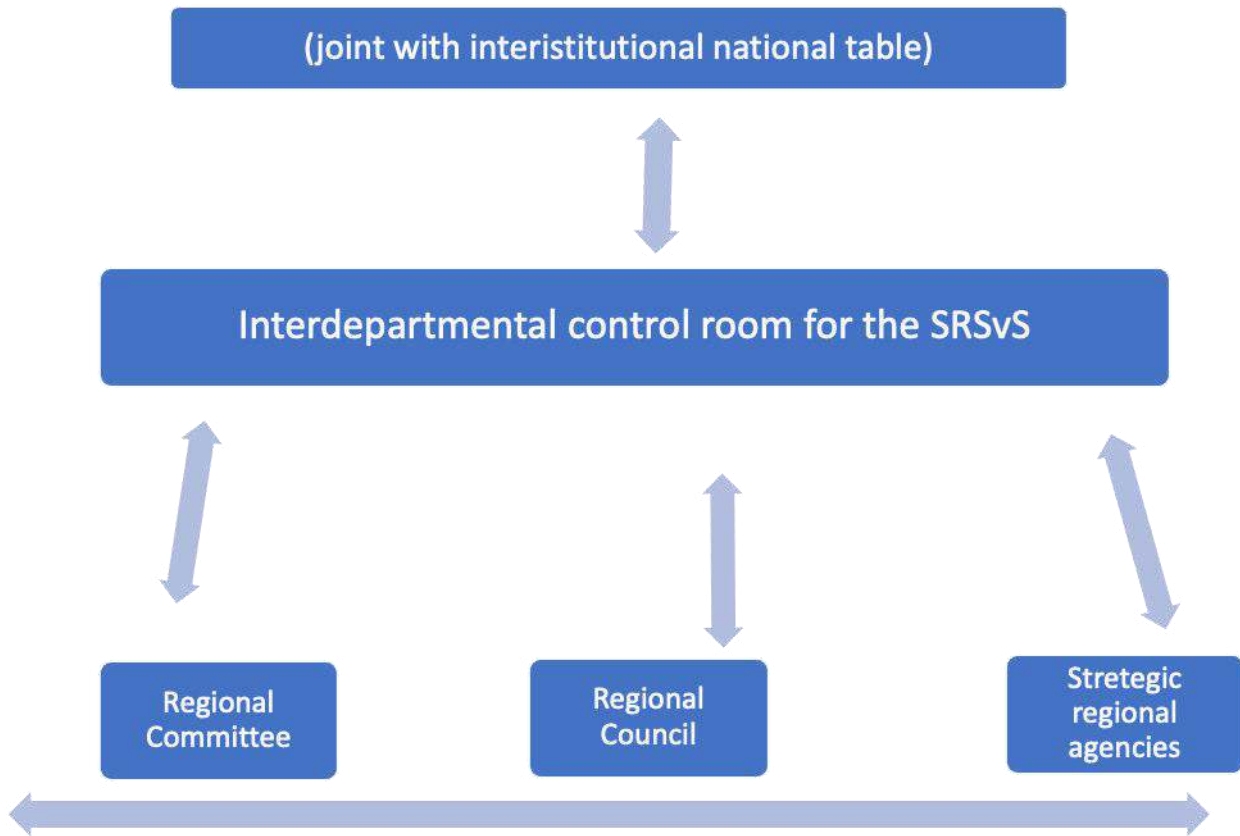
---

<sup>1</sup> Law n. 163/2016 reformed the budget law, the main instrument of the public finance maneuver together with the stability law. With Law n. 163/2016 Sustainable well-being enters for the first time in the process of defining economic policies, bringing attention to some fundamental dimensions for the quality of life in their effect. The Puglia Region approved the regional law n. 47 31 October 2019 "Fair and sustainable well-being (SWB/BES) in support of regional budget and financial planning".

# 2

## Governance of implementation and monitoring

The Interdepartmental Control Room (CdR/ICR), established for the Governance of the SRsvS construction process, started operational activities in April 2019, and then was implemented with the Control Room of the Regional Development Plan. The latter in 2018 had already laid the foundations of a reflection on the design of a regional strategy focused on sustainability. The Control Room, composed as follows, performs coordination and direction functions in order to guarantee support for decision-making processes, as well as linkups with the National Inter-institutional Table, representing the place responsible for the collaboration and coordination of the various sections of the Regional Council, of the Regional Council and of the Regional Strategic Agencies.



The Interdepartmental Control Room in the period between June 2019 and January 2020, promoted a participatory process marked by three macro phases below:

| period            | aim                               | Activity            | Participants                    |
|-------------------|-----------------------------------|---------------------|---------------------------------|
| 2019<br>June/July | <b>A. Strategic lines</b>         | <b>Town Meeting</b> | Mayors and local administrators |
|                   | Identification of a first address |                     |                                 |

|                   |                                                                                                         |                                                        |                                                                                                                                                  |
|-------------------|---------------------------------------------------------------------------------------------------------|--------------------------------------------------------|--------------------------------------------------------------------------------------------------------------------------------------------------|
|                   | system                                                                                                  |                                                        |                                                                                                                                                  |
| 2019<br>September | <b>B. Political themes</b>                                                                              | <b>8 Focus group</b>                                   | Local Mayors and Administrators, Economic-Social Partnership, Regional Departments and Agencies, Universities, Third Sector, Individual Citizens |
|                   | Collection of participatory contributions around the solicitations presented by thematic position paper |                                                        |                                                                                                                                                  |
| 2020<br>January   | <b>C. The 2030 Agenda Global Goals</b>                                                                  | <b>First Regional Forum on sustainable development</b> | Local Mayors and Administrators, Economic-Social Partnership, Regional Departments and Agencies, Universities, Third Sector, Individual Citizens |
|                   | Deepening of the vision and strategies in relation to the 2030 Agenda Goals                             |                                                        |                                                                                                                                                  |

In order to promote informed participation, the website <http://manoamano.regione.puglia.it/> was set up in June 2019. The website is the result of a complex and important survey of the administrative actions of regional councils, departments and agencies. It is useful to point out that the portal also represents an effective monitoring tool for both "internal" and "external" use, thanks to a constant updating and enrichment of the published contents. Alongside the events in attendance, the participatory path was parallel by the collection of contributions and online debates, through the regional platform *Pugliapartecipa*. The launch of four areas specifically dedicated to the themes and contents of the strategic plan followed. Through the Town Meeting with Mayors and Administrators from all over the regional territory, a discussion was promoted starting from the specific local needs useful for defining actions and measures for the completion of the regional government program. This was done in order to bring out an initial system of guidelines on which to orient the strategic development to 2030 in relation to 8 areas of discussion:

1. Agriculture
2. Environment, energy and waste
3. Institutional re-organization and participation
4. Health, sport and well-being
5. Economic development, innovation and infrastructure
6. Territory, beauty and landscape
7. Tourism and culture
8. Welfare, work, training and youth policies

In addition, as part of the 2019 edition of the Fiera del Levante in Bari, 8 thematic participatory focuses were promoted through which the contents of the implemented position papers were proposed for comparison with the institutional and social economic partnership, universities, associations and citizens. The contents of position papers are implemented by Regional Departments and Agencies assisted by the Evaluation and Verification Unit of Public Investments and by the IPRES (Apulian Regional Institute of Economic and Social Research) Foundation, in order to collect ideas and proposals for the definition of the vision and strategic guidelines for sustainable development:

- 1. Towards the Social and Gender Report of Puglia Region**  
area: Istitutional and participation
- 2. For a law of Beauty**

area: Environment, territory and landscape

**3. Destination Puglia: nature, culture and innovation, levers of tourism development**

area: Economic development and competitiveness

**4. Welfare perspective in Puglia: protection, inclusion, investment and social innovation**

area: welfare

**5. Sustainable Puglia: strategies for safeguarding the natural capital**

area: Environment, territory and landscape

**6. Health in the regional development plan**

area: Health, sport and well-being

**7. Experimenting the future: young people, ideas and policies for social innovation**

area: Human capital

**8. Infrastructure as factors of territorial competitiveness**

area: Economic development and competitiveness

In January 2020, the first part of the participation process for the drafting of the vision document was concluded with the launch of the First Regional Forum on Sustainable Development entitled “Act for climate”, aimed at collecting contributions with the aim of deepening and verifying the strategic vision with respect to their declination of global goals for sustainable development, specifically to SDG 13 “Promote actions, at all levels, to combat climate change”. The participatory debate started with the contents outlined in the motion for the Climate Emergency Declaration approved by the Regional Council in November 2019 and from what emerged in the Opinion presented in June 2019 in Brussels at the Committee of the Regions “A clean planet for all - Strategic vision long-term European economy for a prosperous, modern, competitive and climate-neutral economy”, where President Michele Emiliano was speaker. The development levers articulated in the position papers of the 20/30 Strategic Plan represent further thematic in-depth contributions placed for discussion in the Forum Tables.

The participation activities were organized in 5 thematic working groups:

table 1 – sustainable development and industrial innovation

table 2 – agriculture and sustainable use of natural resources

table 3 –resilient and sustainable urban environments

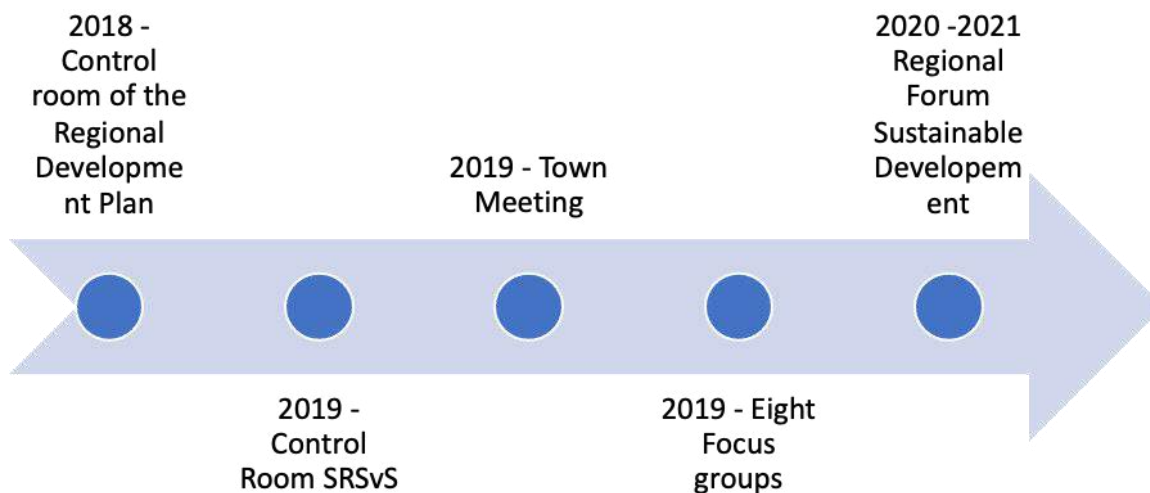
table 4 – lifestyles and responsible consumption

table 5 – training, communication and partnership

The methodology was based on an initial experimentation of the hybridization between offline participation and online participation, with the instant publication of the contributions collected at the tables on the *pugliapartecipa* platform, as a form and opportunity for strengthening and widening the public debate.

The meetings for the drafting of the vision document saw the active participation of about 2000 people.

The reports of the meetings, available for public consultation on the *pugliapartecipa* platform, were delivered to the Control Room for the analysis and integration of the contents collected in a final document at the last drafting stage. The document will provide the analysis of the regional context, propaedeutic for the definition of the sustainable development objectives of the Puglia Region.



As for the monitoring of the regional strategy, a specific plan has been drawn up - defined in accordance with the Monitoring Plan of the National Strategy, with the indicators of the Cohesion Policy 2021-2027 and with the document for the Impact Assessment of Gender (VIG) provided for by the Regional Council Resolution no. 365/2021 - and is currently being prepared. The process of defining this plan, however, is still underway also at the national level, in line with the definition of the indicators of the 2030 Agenda

The UN Statistical Commission has formed a working group to define a set of indicators for monitoring the implementation of the 2030 Agenda at a global level, called the Inter Agency Expert Group on SDGs (IAEG-SDGs). Istat, a member of this agency, has developed the Istat-Sistan SDGs indicators which are updated twice a year and are published in the "SDGs Report" every year to provide an overview of the progress made by Italy towards the objectives of the 2030 Agenda.

In Italy, the "Working Table on indicators for the implementation of the national sustainable development strategy" has been operational since March 2018, composed of the Ministry of the Environment and the Protection of the Territory and the Sea, the Ministry of Economy and Finance, the Ministry of Foreign Affairs and International Cooperation, ISTAT and ISPRA which has currently identified a first list of 43 indicators chosen from the indicators developed by the Inter Agency Expert Group on SDGs and the indicators of Fair and Sustainable Wellbeing (BES).

The Gender Impact Assessment, which is being introduced on a pivotal basis in the Puglia Region, is a valid model for all phases of the evaluation activity during the programming period, with the aim of implementing, monitoring and evaluating the effectiveness and the control of the measures and actions outlined in community, national and regional policy documents, in order to pursue the principle of equal opportunities taking into account gender transversality.

The VIG of the Puglia Region starts from the 5 strategic objectives to tend towards when planning measures and interventions and aims to define:

- ✓ indicators for context analysis and scenario assessment
- ✓ "gender" criteria for the drafting of directives and calls for tenders and gender criteria for the selection of projects
- ✓ a minimum set of gender-sensitive indicators for evaluating the effects (output and result indicators) valid for mid-term and ongoing evaluation



- ✓ A focus for deepening thematic analysis related to areas considered significant for the evaluation representing a source of reflection for the definition of impactful indicators in terms of gender which are useful for ex post evaluation. These investigations have the aim of identifying a system of indicators useful for assessing the impact of equal opportunity policies.
- ✓

This model will allow the definition of:

1. Actions that have as their primary objective the achievement of equal opportunities, as they are specifically and primarily aimed at gender equity (Gender positive)
2. Actions that are not aimed primarily at equal opportunities, but which provide a contribution to reducing inequalities and promoting gender equity (Gender-oriented)
3. Neutral actions, which do not contribute to reducing inequalities or improving gender equity (Gender neutral).

The adoption of this evaluation model will allow the construction of a data collection system suitable for defining a "gender indicator" at the regional level that can be the basis for monitoring the implemented interventions and supplement the strategic decisions of the administration, called GENDER INDEX.

# 3

## Territorial strategy and policy coherence

The definition of the system of Regional Sustainable Development Goals ORSS (RSDGs) of Puglia moves within the framework defined by the Regional Government Program, adopted on the 26th of November 2020, with which the Council outlined the strategies and policies to be implemented over the legislature, to be able to combine competitiveness, attractiveness and solidarity as desired by the 2030 Agenda and the National Strategy for Sustainable Development.

The ORSS (RSDGs) coherently cross the goals of the 2030 Agenda and the Policies defined by the 2021-2027 Community programming, the regional Gender Agenda and the strategy of adaptation to Climate Change, targeting regional choices in the field of environmental, social and economic sustainability. From the coherence analysis that has been carried out, it results those the regional development choices show a high permeability to the programming devices, providing the region with effective and shared guidance tools.

The list of Regional Sustainable Development Goals defined in the preliminary guidance document approved with DGR n.687 / 2021 is shown in Appendix 2, divided into 10 areas of intervention.

Cohesion policy for the 2021-2027 programming period provides for the pursuit of five policy objectives (POs). Based on these objectives, the European Commission has identified the investment priorities concerning funds for the effective implementation of the 2021-2027 cohesion policy for Italy in Annex D of the 2019 Country Report, including the in-depth examination on the prevention and adjustment of macroeconomic imbalances. This is a document drawn up in the context of the 2019 European Semester. The aforementioned Annex D constitutes the basis for a dialogue between Italy and the Commission services with regards to the programming of cohesion policy funds. The Commission suggests that Italy concentrates resources for each thematic objective on the following priorities:

- ✓ PO 1
  - strengthen research and innovation capacities and the spreading of advanced technologies
  - promote the digitization of citizens, businesses and public administrations
  - improve digital connectivity
  - improve growth and competitiveness
- ✓ PO2
  - Promote energy efficiency measures and priority investments in favour of renewable energies
  - promoting climate change adaptation, risk prevention and disaster resilience
  - promoting sustainable water and waste management and the circular economy
  - promote the actions included in the sustainable urban mobility plans
- ✓ PO3
  - develop a sustainable, climate resilient, smart, safe and intermodal trans-European transport network
  - develop sustainable, climate resilient, smart and intermodal regional mobility
- ✓ PO4

- improve access to employment, modernize labour market institutions and promote the participation of women in the labour market
- to improve the quality, accessibility, effectiveness and relevance for the labour market of education and training and in order to promote lifelong learning
- enhance active inclusion, promote socio-economic integration of people at risk of poverty or social exclusion, tackle material deprivation, improve the accessibility, effectiveness and resilience of health care and long-term care to reduce health inequalities

✓ P05

Territorial strategies must be implemented in synergy with other political objectives, with the primary aim of promoting the economic and social development of the areas most affected by poverty.

Investments are therefore necessary at a territorial level, in terms of functional areas:

1. Metropolitan functional areas face the challenges related to poverty, also caused by the "agglomeration" effect and demographic trends;
2. medium-sized urban areas need to develop innovative ways of cooperation for improving their economic, social and environmental potential, taking into account the most vulnerable groups;
3. In-land areas facing demographic challenges and poverty need to improve the quality of general interest services.

The Governmental Program of the Puglia Region provides for a specific commitment to reducing the gender democracy gap and a strong boost to gender policies in all sectors. This finds further foundation in the UN 2030 Agenda for sustainable development, identified as an essential cornerstone for the declination of regional development strategies within the programming processes.

Despite a particularly advanced regulatory context and the sustained investments, as a matter of fact, the Puglia Region is still characterized by particularly critical levels of gender gap affecting women in all dimensions: political, social, cultural and economic. Furthermore, territorial inequality between the North and South of the country which naturally exacerbates gender inequality even more.

The regional law n. 7 of 8 March 2007 "Regulations for gender policies and services for the reconciliation of life - work in Puglia" had already identified gender equality as an objective of economic and social equality capable of producing positive and circular effects not only on the lives of women and men of Puglia but also for the community as a whole.

Therefore, with resolution no. 365 of 8 March 2021, an impetus was given to the drafting of a Gender Agenda as a systematic, articulated and multidisciplinary intervention capable of radically reversing the guidelines of development so that the gender gap is bridged and the conditions for a real equal access of women to the constitutionally guaranteed rights of work and quality of life, most importantly, by guaranteeing the conditions so that the gender perspective and the needs of women are fully integrated in the decision-making tables and in the planning processes.

This resolution provides that the Gender Agenda is translated into a strategic vision document integrated with the regional Sustainability Strategy that outlines indications in terms of global, specific and operational objectives to be integrated into all regional policies having in this regard the following priority axes, deriving from the analysis of the main socio-economic indicators.

The strategic objectives identified are the following:

#### QUALITY OF LIFE FOR WOMEN AND MEN

1. To improve the living conditions of women and to promote active participation

(Contrasting stereotypes, urban agenda, gender medicine, social infrastructure, transport, associations, consultative and representative bodies)

#### EDUCATION TRAINING AND WORK

##### 2. Female empowerment in strategic education/training/work sectors

(Fight against educational poverties, incentives for access to the labour market, work-life balance, leave for men)

#### COMPETITIVENESS, SUSTAINABILITY AND INNOVATION

##### 3. Promote the participation of women in sustainable development processes and innovation

(Entrepreneurship, self-employment, stem disciplines, digital empowerment, research and innovation)

#### QUALITY WORK

##### 4. Improve working conditions for women

(Fight against job insecurity, fight against undeclared work and harassment in the workplace, flexibility, career paths and professional retraining, wage gaps, equal leave for all)

#### FIGHT AGAINST MARGINALITIES and GENDER VIOLENCE

##### 5. Tackle violence and discrimination motivated by sexual orientation and gender identity, combat all forms of marginalization and discrimination

(Fight against poverty, income support, social inclusion of immigrants, anti-violence centres, training interventions in schools, economic support for women victims).

The Gender Agenda, therefore, constitutes an integral and substantial part of the Regional Strategy for Sustainable Development and a reference document for specific planning documents, also with reference to the monitoring and evaluation systems of the interventions.

Finally, for the implementation of the SRSvS, the implementation of a Regional Strategy for Adaptation to Climate Change (SRACC), a path initiated by the Puglia Region with DGR n. 1575 of 17/09/2020, in order to systematize the experiences and information currently available on the climate phenomenon and identify adequate measures capable of strengthening the resilience of territories.

To enrich the framework of the regional strategy for the achievement of the SDGs 4 objective is added to the Regional Plan for tackling educational poverty which, as shared by the Regional Council in the session of the 15th of March 2021, Communication SUR / COM / 2021/00010, identifies access to knowledge, intended both as a contrast to educational poverty and as an extraordinary plan for training and research, as one of its fundamental pillars. In the belief that only a large investment in the human and social capital of children and young people can be the strongest lever to counter social marginality and to reduce inequalities, as well as to increase the competitiveness of Apulian production systems and the attractiveness of the Puglia Region.



# 4

## Participation and promotion of a culture for sustainability

The Puglia Region is among the few Italian regions to have adopted a Law on Participation (L.R. 28/2017) which promotes the culture of participation as an ordinary form of government.

In this context, the SRSvS is a dynamic participatory process which is also fed by the results of the [Regional Sustainable Development Forum](#).



The governance of the process is supported by moments of sharing and participation by civil society in its various representations, through the **Regional Sustainable Development Forum**. The objective of the Forum is to side the definition and subsequent implementation of the regional strategy

for sustainable development (and the 2030 Agenda) through the effective contribution of the actors who promote actions and policies in favour of sustainability. The Forum also qualifies as the space in which to bring out and affirm the subjects and practices of sustainability, according to a process of encounter between public policies and social energies. Returning the contribution of civil society to the monitoring document of the implementation of the SRSvS annually is among the objectives.

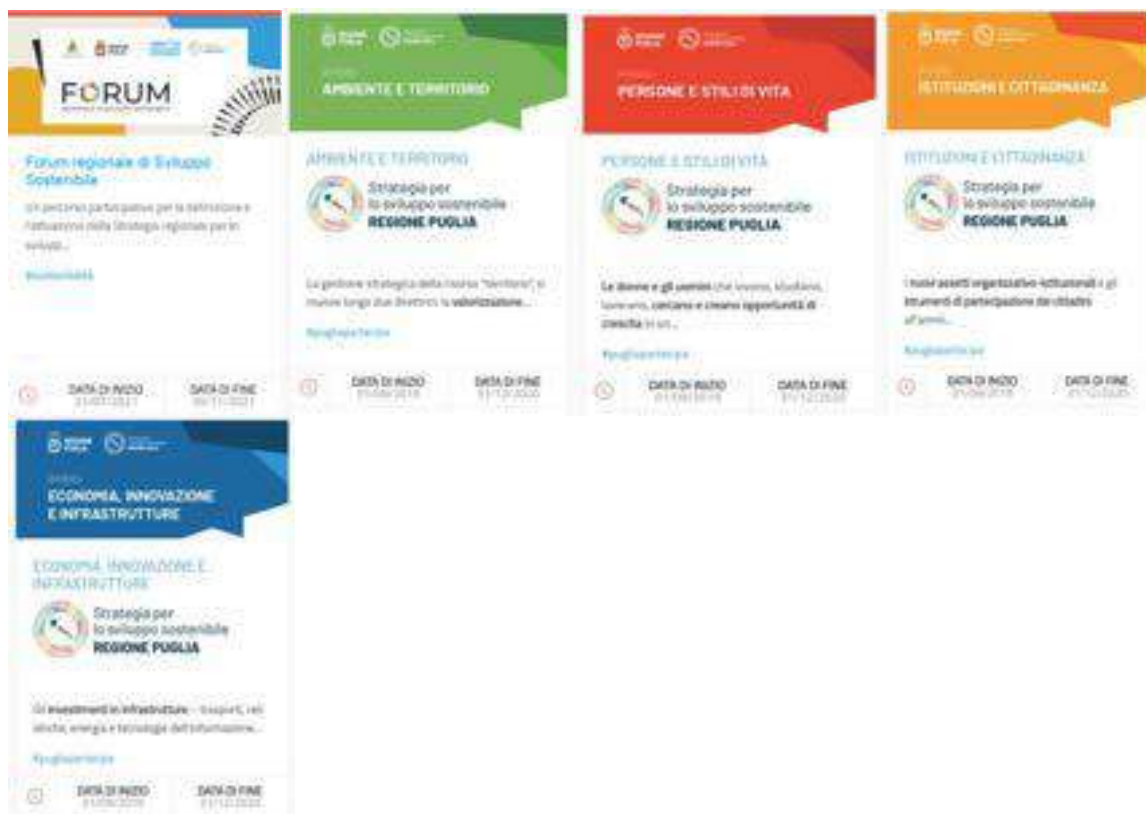
The task of the Forum is to guarantee the MiTE and the Regions involved in the formulation and implementation of their regional strategies, a contribution in terms of operational indications. This is for the effective implementation of the Strategy and the actions connected to it, as well as the recommendations and opinions on how to deal with critical issues, communicate the Strategy, consolidate its results, encourage the exchange of information and networking between the actors of sustainability at all levels.

The first meeting of the Forum was held on 23<sup>th</sup> of January 2020 entitled "**Agire per il Clima (Act for the Climate)**" which saw the presence of the President of the Region, the various regional structures represented by officials and managers and by representatives of civil society made up of associations, agencies, research institutions, students and teachers involved in participatory discussions on 5 thematic tables. The meeting's goal has been to collect in this event on the climate theme contributions aimed at defining a strategic vision based on sustainable development objectives to guide and permeate regional policies, programs and planning in the environmental social and economic field. Due to the Covid-19 pandemic health crisis, in-person activities were suspended and were reactivated only in July 2021. In the year 2021, therefore, another four meetings of the Forum for Sustainable Development were held as summarized below:

- **Governance of sustainability: comparing experiences**, held in Bari on the 21<sup>st</sup> of July 2021, at the "Casa della Partecipazione" (Participation home) in the Fiera del Levante exhibition centre.
- **The ecological transition and the strategy for gender equality**, held in Bari, on the 21<sup>st</sup> of July 2021, at the "Casa della Partecipazione" in the Fiera del Levante exhibition centre.

- **Circular economy and sustainable development for Puglia**, held in Bari on 22nd of September 2021, at Villa Romanazzi Carducci.
- **Sustainable development in protected areas: towards a strategy for biodiversity**, held in Otranto, on 24th of September 2021, at the Aragonese Castle.

All the details of the aforementioned meetings and the related reports are available on the [Pugliapartecipa platform](https://partecipazione.regione.puglia.it/processes/ForumSviluppoSostenibile/f/451/) (<https://partecipazione.regione.puglia.it/processes/ForumSviluppoSostenibile/f/451/>).



## SUSTAINABILITY EDUCATION

Another instrument of fundamental importance for raising awareness of local communities on Sustainable Development and, linked to that, the implementation of the Strategy is represented by the In.F.E.A. (Network of Information, Training and Environmental Education), which has been organized on a national and regional scale since its launch.

The Conference of Regions and Autonomous Provinces in the session of the 1<sup>st</sup> of August 2019 approved the final document of the Cagliari Conference which relaunches the In.F.E.A. on a national scale and promotes "the commitment of the Regions and Autonomous Provinces to enhance and innovate their IN.F.E.A. systems regional in the view of greater openness to all social and productive components (open and inclusive systems), development of exchanges of experiences at national and international level (networks of relations and cooperation), improvement of external communication skills, involvement of the media and use of the WEB, greater listening to the real needs of sustainability and social cohesion of the various territorial realities (territoriality), the promotion of

experimentation and research in the educational field towards experiential and systemic approaches, the acquisition of greater professional skills and the improvement of the quality of the offered services, also through the development of systems of quality indicators, guaranteeing third parties in the animation of participatory processes for sustainability".

It is in this perspective that Education for Sustainability becomes an implementing pillar of the SRSvS, through the definition of a "Regional Sustainability Education Program" which will be defined and implemented by the Puglia Region as part of the agreements signed with the MiTE.



# 5

## Metropolitan Agenda City Bari

### MANAGEMENT AND GOVERNANCE METHODS

Following the public notice intended for metropolitan cities about the candidature of interest manifestations in activities "referred to in art. 34 of the legislative decree n. 152/2006 and subsequent amendments.", CM of Bari has obtained funds for Metropolitan Agenda for Sustainable Development drafting. The candidate project aimed to define a Metropolitan Agenda for Sustainable Development integrated with the drafting of the Bari 2030 Metropolitan Strategic Plan in a multilevel metropolitan framework. This working methodology will make it possible to implement integrated urban and territorial policy interventions, creating a form of territorial governance more efficient, shared, and able to enhance planning tools, also through monitoring and reporting on local policies. For the Agenda drafting, a multidisciplinary control room working group has been set up, composed of technical and political figures from the Metropolitan City of Bari, scientific figures from the academic world, involving the Department of Civil Engineering and Architecture of the Polytechnic University of Bari and the University Center of Excellence for Sustainability of the University of Bari "A. Moro", and by external figures of support identified by a public tender procedure, made by economic operator ASVIS" Italian Alliance for Sustainable Development "as technical assistance subject for the necessary activities for Agenda drawing.

The work for the elaboration of the Agenda continues at a rapid pace, to date we have come to the definition of a draft of a Sustainable Metropolitan Agenda, composed of a broad framework of knowledge, which starts from a recognition of the objectives for sustainable development and related indicators in current legislation at the international and national level. Subsequently, steps were taken to descend from the Regional and Metropolitan levels, ultimately analyzing the data of the City of Bari. The picture of knowledge is also rich in comparisons between Italian metropolitan cities, thanks to which it is possible to identify the position of the CM of Bari in the panorama of Sustainable Development and the policies and actions implemented in recent years.

An open and shared work plan has been defined, allowing the identification of the "core" indicators; monitoring the progress of the 2030 agenda in the metropolitan city with the "core" sustainable development indicators; the presentation and discussion with the local administrations, the recognition of the actions already in place or planned relating to the metropolitan objectives; the inclusion of indicators related to the specificity of the reality under analysis; the definition of metropolitan objectives and identification of the related indicators; the definition of new policies for the achievement of the identified objectives and the monitoring of the impact of the policies concerning the achievement of the objectives.

### COHERENCE WITH PUBLIC POLICIES

The Metropolitan Agenda for Sustainable Development is consistent with the Strategy of the Puglia Region for Sustainable Development, currently being drawn up, and with the National Strategy for Sustainable Development (SNSvS) as a declination of the UN Agenda 2030. The "Città Metropolitana di Bari" is defining the Bari Metropolitan Strategic Plan (PSM) through active participation paths, already launched in September 2019, of which Sustainable Development is the founding element and with which the Agenda will have to measure and integrate. The constant and continuous action of co-planning and co-planning with the 41 metropolitan municipalities will allow them to implement their

development programs through the use of the programming tools of the Puglia Region, the National Government Institutions, and the European Community.

The speed of changes during the Covid-19 emergency and the collapse of certainties occurs very drastically, changing priorities in everyday life. The necessary restrictions on the mobility of people and the performance of economic activities assisted in providing interesting insights into the priorities and references to the UN 2030 Agenda for sustainable development. In light of the pandemic and to make the territories of the CM more resilient, it was necessary to turn on a beacon to counter the increase in inequalities (through the reduction of disparities in the municipalities of the metropolitan area of access to the health service, the creation of an innovative and more digitally inclusive school system, the relaunch production sectors in a way compatible with environmental protection, the protection of the weakest with effective structural measures). The structural actions to be implemented have the ambition to "cure Italy of today, to look at Italy of tomorrow", thanks to short and long-term measures, capable of also rebalancing the balance between the South and the North metropolitan area, enhancing the environmental and cultural characteristics of the identifying places of the metropolitan area.

To re-establish contexts capable of formulating objectives and actions that can bring out existing potential and new opportunities, it is necessary to share the choices with the best knowledge and professionalism, to convey common and specialized knowledge into the planning process. The drafting of the Metropolitan Strategic Plan is incorporating problems such as social isolation, digital divide, lack of green space and infrastructures to transform them through new impulses deriving in particular from the new perception of people, into opportunities to raise the quality of life, re-establish the priorities that they care about climate, health, water, food, and resilient cities. It incorporates an everyday life the positive effects of smart working, the discussed distance learning, the redevelopment of abandoned spaces, and the conservation and protection of the landscape, safeguarding and guaranteeing not the dignity of the individual, but the community.

## CIVIL COMPANY INVESTMENT

COVID 19 has caused a severe humanitarian crisis at a global level, and it is not be addressed in a univocal and diversified way, between individual Metropolitan Cities, Regions, or States. A more supportive approach is needed between developing states and states with more fragile economic conditions. All the Goals of the 2030 Agenda are linked by the common thread of Sustainable Development and only with a concrete improvement of all 17 Goals could we improve the living conditions on the planet. As highlighted by the UN 2030 Report published in July 2020, it appears necessary to mitigate the effects of the pandemic and avoid a retreat on the various sides of sustainable development, starting from that relating to Health and well-being (Goal 3), Defeating poverty in the world (Goal 1) and inequality within and between Nations (Goal 10). The policies linked to the post-Covid recovery are influencing the near future and the intervention priorities, identifying short and long-term scenarios, with effects on Metropolitan Strategic Planning; but in substance, the ambitious and concrete aims of Bari20> 30 remain unchanged. Experimenting with innovative collaborative governance processes and the development of widespread skills; the digitalization of services and the strengthening of infrastructures to reduce the digital divide; the important issue of sustainable mobility, fundamental for urban travel, work connections, and the positive change in lifestyles; the enhancement of natural and cultural attractions, which requires reflection on alternative forms of use to mass tourism; the current housing schemes that need a thorough review, as well as the organization of proximity services must be rethought; the role of public green, to be understood not as an element of urban decoration but as a reserve of naturalness to ensure healthiness to inhabited contexts and continuity to ecosystems. These issues, partly addressed in the drafting of the Metropolitan Single Programming Document, constitute important elements for reflection, more carefully and highlighted by the pandemic, given their strategic importance in the "new restoration of

priorities". The European Commission has issued guidelines for the preparation of National Recovery and Resilience Plans, a historic opportunity to guide public policies in favor of Sustainable Development, helping to promote the economic, social, and territorial cohesion of the Union; strengthening economic and social resilience and adaptability; mitigate the social and economic impact of the crisis and support green and digital transitions.

The Metropolitan Agenda for Sustainable Development of the CM of Bari was born in the same historical context, representing an operational tool to achieve the Sustainability Goals of the 2030 Agenda, consequently linking the recovery policies to the Sustainable Development Goals of the United Nations, the metropolitan area could represent an interesting field of experimentation, considering the size and commitment undertaken to date.

## Attachment n. 1

| Thematic area                                                                                                                                                                                                                                                       | Development goals                                                                                                                                          |
|---------------------------------------------------------------------------------------------------------------------------------------------------------------------------------------------------------------------------------------------------------------------|------------------------------------------------------------------------------------------------------------------------------------------------------------|
| <b>A PACT FOR THE CLIMATE AND FOR A GREEN AND SUSTAINABLE ECONOMY</b>                                                                                                                                                                                               | Circular economy law                                                                                                                                       |
|                                                                                                                                                                                                                                                                     | Encouragement of environmental taxation, support of businesses in order to promote sustainable and innovative industrial processes                         |
|                                                                                                                                                                                                                                                                     | Greener cities to reduce CO2 emissions, urban reforestation                                                                                                |
|                                                                                                                                                                                                                                                                     | Energy efficiency of all public structures and photovoltaic roof systems                                                                                   |
|                                                                                                                                                                                                                                                                     | Energy communities in municipalities and implementation of energy income                                                                                   |
|                                                                                                                                                                                                                                                                     | General states of agriculture for the writing of the new RDP                                                                                               |
|                                                                                                                                                                                                                                                                     | Closure of the waste cycle of public plants and enhancement of recyclable fractions                                                                        |
|                                                                                                                                                                                                                                                                     | Closure of the water cycle and reuse in agriculture and industry                                                                                           |
|                                                                                                                                                                                                                                                                     | Investments in sustainable mobility and in strengthening the public transport and rail network                                                             |
|                                                                                                                                                                                                                                                                     | Centrality of urban regeneration, in terms of social inclusion and proximity services                                                                      |
|                                                                                                                                                                                                                                                                     | Support for Municipalities that implement large area plans to adapt to changes                                                                             |
|                                                                                                                                                                                                                                                                     | Re-organization of the regional system of parks and protected areas                                                                                        |
|                                                                                                                                                                                                                                                                     | Coastal monitoring plan useful for updating the data of the Regional Coastal Plan                                                                          |
|                                                                                                                                                                                                                                                                     | Redevelop degraded areas linked to unauthorized building to restore new opportunities for regeneration of degraded landscapes                              |
|                                                                                                                                                                                                                                                                     | Update of the air quality plan and enhancement of the monitoring network                                                                                   |
| Contrast to xylella, continuing the containment policies undertaken, intensifying constant monitoring, replanting of resistant cultivars in the preservation of the landscape and monumental olive trees, disseminating of good agricultural practices and research |                                                                                                                                                            |
| Implementation of the landscape and agricultural plan of Salento (Puglia)                                                                                                                                                                                           |                                                                                                                                                            |
| Thematic area                                                                                                                                                                                                                                                       | Development goals                                                                                                                                          |
| <b>MORE COMPETITIVE WITH PUGLIA IN THE WORLD</b>                                                                                                                                                                                                                    | Great boost to research and innovation with the establishment of the register of research organizations and focus on the digital and ecological transition |
|                                                                                                                                                                                                                                                                     | Strategic infrastructure works                                                                                                                             |
|                                                                                                                                                                                                                                                                     | Broadband enhancement                                                                                                                                      |
|                                                                                                                                                                                                                                                                     | Digitization for businesses                                                                                                                                |
|                                                                                                                                                                                                                                                                     | Farms aggregation                                                                                                                                          |
|                                                                                                                                                                                                                                                                     | Single portal for agriculture                                                                                                                              |
|                                                                                                                                                                                                                                                                     | Promote the participation of women in the creation of economic activities                                                                                  |
|                                                                                                                                                                                                                                                                     | Digital ecosystem of tourism                                                                                                                               |
|                                                                                                                                                                                                                                                                     | Integration of vocational education and training paths linked to strategic sectors                                                                         |
|                                                                                                                                                                                                                                                                     | Sustainability and innovation in the field of the blue economy for the enhancement of the territory and the overcoming of industrial monoculture           |
|                                                                                                                                                                                                                                                                     | Orienting female entrepreneurship and self-employment towards expanding and/or innovative production sectors                                               |

|                                                                                     |                                                                                                                                                                                                                                                                                               |
|-------------------------------------------------------------------------------------|-----------------------------------------------------------------------------------------------------------------------------------------------------------------------------------------------------------------------------------------------------------------------------------------------|
|                                                                                     | Strengthening of financial instruments, with specific tools to support female entrepreneurs                                                                                                                                                                                                   |
|                                                                                     | Integration of facilitation tools to support businesses                                                                                                                                                                                                                                       |
| <b>Thematic area</b>                                                                | <b>Development goals</b>                                                                                                                                                                                                                                                                      |
| <b>A REGION WHERE NO ONE IS BEHIND</b>                                              | Strengthening of the health and social care area, to increase the integrated and dynamic capacity to take charge of non-self-sufficient people                                                                                                                                                |
|                                                                                     | Integration between socio-welfare, socio-health and socio-labour policies                                                                                                                                                                                                                     |
|                                                                                     | Prevention and contrast of all forms of discrimination, mistreatment and violence, through the strengthening of the network of services and anti-violence centres and shelters                                                                                                                |
|                                                                                     | Investments for the digital divide between families, with a focus on female skills                                                                                                                                                                                                            |
|                                                                                     | Consolidation of the network of services for the care of minors, people with disabilities and the elderly and the experimentation of complementary and innovative services                                                                                                                    |
|                                                                                     | Combating poverty through a path of active social inclusion with planning and monitoring of the results achieved                                                                                                                                                                              |
|                                                                                     | Combating educational poverty                                                                                                                                                                                                                                                                 |
|                                                                                     | Fight against gender-based violence, through active collaboration with the regional school office, universities, schools, training institutions - as a fundamental lever for social change, also necessary for the prevention and contrast of all forms of sexist violence and discrimination |
|                                                                                     | Fight against stereotypes through public communication and cultural change initiatives                                                                                                                                                                                                        |
|                                                                                     | Generative and enhancement paths of immigrants in local communities                                                                                                                                                                                                                           |
|                                                                                     | Adoption of correct lifestyles and habits, promotion of sport                                                                                                                                                                                                                                 |
|                                                                                     | <b>Thematic area</b>                                                                                                                                                                                                                                                                          |
| <b>I WANT TO LIVE IN PUGLIA</b>                                                     | Research and study centre on cultural heritage that can offer a return opportunity to young scholars of the region                                                                                                                                                                            |
|                                                                                     | Support for post-graduate training                                                                                                                                                                                                                                                            |
|                                                                                     | Support for youth start-ups, observers and accompaniment                                                                                                                                                                                                                                      |
|                                                                                     | Enhancement of training and work orientation measures and coordination with employment centres                                                                                                                                                                                                |
|                                                                                     | Culture card for poor young people                                                                                                                                                                                                                                                            |
|                                                                                     | Creation of clusters of companies to finance the attraction of talent, recruiting                                                                                                                                                                                                             |
|                                                                                     | Promotion of social innovation paths, community animation and urban regeneration with the collaboration of the third sector                                                                                                                                                                   |
|                                                                                     | PugliaWiFi to guarantee free connection in public places                                                                                                                                                                                                                                      |
|                                                                                     | Promote STEM disciplines                                                                                                                                                                                                                                                                      |
|                                                                                     | Promote corporate welfare interventions and investments in the network of local services                                                                                                                                                                                                      |
|                                                                                     | Support for youth enterprises capable of impacting structural development gaps                                                                                                                                                                                                                |
|                                                                                     | Streamlining of bureaucratic procedures relating to factories                                                                                                                                                                                                                                 |
| Creation of a public and/or private SEED fund (funds for start-ups starting a path) |                                                                                                                                                                                                                                                                                               |
| <b>Thematic area</b>                                                                | <b>Development goals</b>                                                                                                                                                                                                                                                                      |

|                                                                |                                                                                                                                                                                                                                                |
|----------------------------------------------------------------|------------------------------------------------------------------------------------------------------------------------------------------------------------------------------------------------------------------------------------------------|
| <b>RIGHTS TO THE FUTURE STARTING FROM KNOWLEDGE</b>            | "Peer to peer orientation": a program that sees the two-year university students tutor high school students to guide them in orientation and thus increase the number of students who enrol at the university and complete the path            |
|                                                                | Strengthening of early childhood services to combat educational poverty                                                                                                                                                                        |
|                                                                | Introduction of the hour of beauty: art becomes a study program for all ages                                                                                                                                                                   |
|                                                                | Specific post-graduate training courses in the training of sectors that help to implement new skills in strategic sectors such as tourism and culture;                                                                                         |
|                                                                | Strengthening of the right to study and gratuities                                                                                                                                                                                             |
|                                                                | Training income                                                                                                                                                                                                                                |
| <b>Thematic area</b>                                           | <b>Development goals</b>                                                                                                                                                                                                                       |
| <b>SUSTAINABLE CITIES FOR A EUROPEAN MODEL</b>                 | Reduce by half the consumption of public buildings and of our networks - starting from that of public lighting                                                                                                                                 |
|                                                                | Realize in our Municipalities, with the support of European funds, at least one NZEB building - Almost Zero Energy Building                                                                                                                    |
|                                                                | Plans of times and spaces                                                                                                                                                                                                                      |
|                                                                | Promote, in concert with national institutions, energy autonomy, by committing ourselves to experimenting with at least one model of local energy community in each regional territory that has not so far been affected by energy communities |
|                                                                | Introduce public green management plans that primarily include the use of native plant species, promoting the widespread distribution of green areas and ecological corridors across our territories                                           |
|                                                                | Promote the development of skills in the sector                                                                                                                                                                                                |
|                                                                | Enhance women's skills in sustainable development                                                                                                                                                                                              |
|                                                                | Urban mobility and accessibility to services                                                                                                                                                                                                   |
|                                                                | Supporting investments for the modernization of the water supply, collection and purification network                                                                                                                                          |
| <b>Thematic area</b>                                           | <b>Development goals</b>                                                                                                                                                                                                                       |
| <b>AN ALWAYS EVOLVING CULTURAL GOAL</b>                        | Proximity tourism                                                                                                                                                                                                                              |
|                                                                | Tourism of the paths, of the pilgrimages, the "Nicolaian" way                                                                                                                                                                                  |
|                                                                | Calls for aid to businesses and support for start-ups                                                                                                                                                                                          |
|                                                                | Tenders for business development and networking                                                                                                                                                                                                |
|                                                                | More governance between public and private                                                                                                                                                                                                     |
|                                                                | Hospitality master plan with the help of businesses                                                                                                                                                                                            |
|                                                                | Training and exchanges with foreign countries, projection to the east and to the Mediterranean                                                                                                                                                 |
|                                                                | Promotion of cultural welfare in generative communities, to support active aging, generational and cultural integration, and to combat educational poverty                                                                                     |
|                                                                | Build and strengthen the supply chain of education services, socio-educational services and educational services in places of culture                                                                                                          |
|                                                                | Contributions to accommodation facilities for environmental sustainability                                                                                                                                                                     |
|                                                                | Family Friendly tourism                                                                                                                                                                                                                        |
|                                                                | Digitization of tourism services                                                                                                                                                                                                               |
| Enhance the skills of women in the tourism and culture sectors |                                                                                                                                                                                                                                                |

|                                                         |                                                                                                                                                                                                                                                                                                                                                                        |
|---------------------------------------------------------|------------------------------------------------------------------------------------------------------------------------------------------------------------------------------------------------------------------------------------------------------------------------------------------------------------------------------------------------------------------------|
|                                                         | Encouragement of educational activities between schools and cultural centres, schools and theatres                                                                                                                                                                                                                                                                     |
|                                                         | Encourage the musical training of young people and the promotion of music with a special fund named after Nino Rota                                                                                                                                                                                                                                                    |
|                                                         | Implementation of Cineports in real centres serving the film and audio-visual industry, by structuring service networks                                                                                                                                                                                                                                                |
|                                                         | Permanent program of artistic residencies and training and involvement of the public, especially younger ones                                                                                                                                                                                                                                                          |
|                                                         | Apulia Theatre Fund, aimed at supporting co-productions of original shows (adult prose, children's theatre, dance, dance-theatre combined).                                                                                                                                                                                                                            |
| <b>Thematic area</b>                                    | <b>Development goals</b>                                                                                                                                                                                                                                                                                                                                               |
| <b>PUGLIA 4.0,<br/>READY FOR THE<br/>CHALLENGE</b>      | Strengthen and make more effective the processes of technology transfer or transfer of scientific knowledge, and those of industrial enhancement of scientific research                                                                                                                                                                                                |
|                                                         | Promote the growth of digital transformation processes both in businesses, especially in micro and small businesses, and in the Public Administration.                                                                                                                                                                                                                 |
|                                                         | Promote and intensify innovative entrepreneurship in the Apulian territories, especially by encouraging the birth and development of "knowledge intensive" innovative start-ups                                                                                                                                                                                        |
|                                                         | Overcoming the digital divide through literacy courses and local services                                                                                                                                                                                                                                                                                              |
|                                                         | Enhance women's skills on digital development                                                                                                                                                                                                                                                                                                                          |
|                                                         | Guarantee the financing of innovation projects that meet the social challenges defined both at the global level (Agenda 2030 for Sustainable Development), and in Europe (Green Deal and Horizon 2021-2027), and in Italy (full employment and quality services for citizens, smart cities) and both regional (gender agenda, fight against Xylella, decarbonisation). |
| <b>Thematic area</b>                                    | <b>Development goals</b>                                                                                                                                                                                                                                                                                                                                               |
| <b>ALL FOR HEALTH,<br/>HEALTH FOR ALL</b>               | Activation of an intersectoral approach for the promotion of the health strategy in all policies, linked to the co-benefits                                                                                                                                                                                                                                            |
|                                                         | Environment and health integration for the prevention and promotion of environmental and health protection                                                                                                                                                                                                                                                             |
|                                                         | Strengthening of territorial medicine                                                                                                                                                                                                                                                                                                                                  |
|                                                         | Strengthening of screening programs                                                                                                                                                                                                                                                                                                                                    |
|                                                         | Territory hospital integration                                                                                                                                                                                                                                                                                                                                         |
|                                                         | Enhancement of integrated territorial assistance                                                                                                                                                                                                                                                                                                                       |
|                                                         | Investments for the promotion of health and healthy lifestyles                                                                                                                                                                                                                                                                                                         |
|                                                         | Organization of hospital and territorial services for gender medicine                                                                                                                                                                                                                                                                                                  |
|                                                         | Strategic control for the appropriateness and safety of drug use                                                                                                                                                                                                                                                                                                       |
|                                                         | Reorganization of the maternal and child area                                                                                                                                                                                                                                                                                                                          |
|                                                         | Strengthening of interventions for psychological well-being and the prevention of psychopathologies                                                                                                                                                                                                                                                                    |
|                                                         | Organization of local health services and social and health integration for the management and treatment of frailties and chronic conditions                                                                                                                                                                                                                           |
|                                                         | Investments for territorial medicine                                                                                                                                                                                                                                                                                                                                   |
|                                                         | Gender medicine                                                                                                                                                                                                                                                                                                                                                        |
| Enhancement of digital health services and telemedicine |                                                                                                                                                                                                                                                                                                                                                                        |
| Humanization of care                                    |                                                                                                                                                                                                                                                                                                                                                                        |
| <b>Thematic area</b>                                    | <b>Development goals</b>                                                                                                                                                                                                                                                                                                                                               |

**THE IMPORTANT  
IS TO  
PARTICIPATE,  
EQUAL**

|                                                                                                                                                                                 |
|---------------------------------------------------------------------------------------------------------------------------------------------------------------------------------|
| Regional protocol for gender language in administrative documents of the region, in correspondence and communication                                                            |
| Gender equality in the declination of administrative and political positions and functions                                                                                      |
| Overcoming the gender pay gap                                                                                                                                                   |
| Reduce the gaps between male and female workers in professional and career paths                                                                                                |
| Promote support actions in favour of women employed with atypical and / or discontinuous contractual methods                                                                    |
| Revision of the electoral law and the Statute for gender equality                                                                                                               |
| Network of all proximity institutions (for example schools) to get closer to the territories and create a collective information / training dimension on gender equality issues |
| Regional Law on homotransphobia                                                                                                                                                 |
| Investments for the reconciliation of home / family / work times                                                                                                                |
| Calls that make the Consultations open and mandatory                                                                                                                            |
| Promote the culture of participation                                                                                                                                            |



## Attachment n. 2

### Puglia's positioning within Southern Italy and Italy and his comparison with the previous year's indicators

(Update february 2022)

*Istat data, processed by the Statistical Office of the Puglia Region*



#### Goal 1 - End poverty in all its forms everywhere

| INDICATORE                                  | Puglia | Mezzo | Italia | PvsM | PvsIta | PugliavsAnnopre | Ult Anno P | Polarità | Unità di misura    |
|---------------------------------------------|--------|-------|--------|------|--------|-----------------|------------|----------|--------------------|
| Rischio di poverta' o di esclusione sociale | 37,4   | 42,2  | 25,6   | -4,8 | 11,8   | 1,7             | 2019       | -        | Valori percentuali |
| Grave deprivazione materiale                | 11,9   | 13,6  | 7,4    | -1,7 | 4,5    | -0,9            | 2019       | -        | Valori percentuali |
| Bassa intensità di lavoro                   | 13,2   | 17,3  | 10     | -4,1 | 3,2    | -0,2            | 2019       | -        | Valori percentuali |
| Rischio di povertà                          | 30,4   | 34,7  | 20,1   | -4,3 | 10,3   | 3,6             | 2019       | -        | Valori percentuali |
| Rinuncia a prestazioni sanitarie            | 10,8   | 9     | 9,6    | 1,8  | 1,2    | 3,6             | 2020       | -        | Valori percentuali |
| Sovraccarico del costo dell'abitazione      | 8,3    | 11,7  | 8,7    | -3,4 | -0,4   | 1,9             | 2019       | -        | Valori percentuali |

|                                                                                                                     |           |           |           |          |          |                |      |   |                    |
|---------------------------------------------------------------------------------------------------------------------|-----------|-----------|-----------|----------|----------|----------------|------|---|--------------------|
| Famiglie molto o abbastanza soddisfatte per la continuita' del servizio elettrico                                   | 93,4      | 92,1      | 94,2      | 1,3      | -0,8     | 0,6            | 2020 | + | Valori percentuali |
| Famiglie che dichiarano difficolta' di collegamento con mezzi pubblici nella zona in cui risiedono                  | 30        | 36,4      | 30,2      | -6,4     | -0,2     | -0,6           | 2020 | - | Valori percentuali |
| Conferimento dei rifiuti urbani in discarica                                                                        | 33,7      | 29,2      | 20,1      | 4,5      | 13,6     | -2,3           | 2020 | - | Valori percentuali |
| Irregolarita' nella distribuzione dell'acqua                                                                        | 7,6       | 17,6      | 8,9       | -10      | -1,3     | -0,2           | 2020 | - | Valori percentuali |
| Famiglie con connessione a banda larga fissa e/o mobile                                                             | 70,5      | 72,5      | 77,8      | -2       | -7,3     | 2,1            | 2020 | + | Valori percentuali |
| Persone di 6 anni e più che usano il cellulare almeno tutti i giorni, per 100 persone con le stesse caratteristiche | 85,1      | 82,8      | 82,6      | 2,3      | 2,5      | 1,8            | 2020 | + | Valori percentuali |
| <b>Totale indicatori confrontabili</b>                                                                              | <b>12</b> | <b>12</b> | <b>12</b> | <b>9</b> | <b>4</b> | <b>8 su 12</b> |      |   |                    |



## Goal 2 - End hunger, achieve food security and improved nutrition and promote sustainable agriculture

| INDICATORE                                                                         | Puglia   | Mezzo    | Italia   | PvsM     | PvsIta   | PugliavsAnnopre | Ult Anno P | Polarità | Unità di misura        |
|------------------------------------------------------------------------------------|----------|----------|----------|----------|----------|-----------------|------------|----------|------------------------|
| Eccesso di peso o obesità tra i minori da 3 a 17 anni di età                       | 33,8     | 33       | 26,3     | 0,8      | 7,5      | 2,6             | 2020       | -        | Valori percentuali     |
| Produzione per unità di lavoro delle aziende agricole                              | 35.258   | 39.439   | 53.228   | -4.181   | -17.970  | -8.877          | 2015       | +        | Euro (prezzi correnti) |
| Quota di superficie agricola utilizzata (SAU) investita da coltivazioni biologiche | 18,4     | 20,1     | 16,4     | -1,7     | 2        | -2,3            | 2020       | +        | Valori percentuali     |
| Tasso di crescita delle coltivazioni biologiche                                    | 1,2      | 2,6      | 5,1      | -1,4     | -3,9     | 0,2             | 2020       | +        | Valori percentuali     |
| Fertilizzanti distribuiti in agricoltura                                           | 221,3    | 240,2    | 558,5    | -18,9    | -337,2   | 5,7             | 2020       | -        | Kg per ettaro          |
| Prodotti fitosanitari distribuiti in agricoltura                                   | 10       | 9,2      | 12,4     | 0,8      | -2,4     | -0,7            | 2019       | -        | Kg per ettaro          |
| Emissioni di ammoniaca prodotte dal settore agricolo                               | 9,7      | 74,8     | 334,6    | -65,1    | -324,9   |                 | 2019       | -        | Migliaia di tonnellate |
| Occupati non regolari in agricoltura, silvicoltura e pesca                         | 29,6     | 31,5     | 24,1     | -1,9     | 5,5      | -0,7            | 2019       | -        | Valori percentuali     |
| <b>Totale indicatori confrontabili</b>                                             | <b>8</b> | <b>8</b> | <b>8</b> | <b>3</b> | <b>4</b> | <b>3 su 7</b>   |            |          |                        |



### Goal 3 - Ensure healthy lives and promote well-being for all at all ages

| INDICATORE                                                                                               | Puglia | Mezzo | Italia | PvSM  | PvStta | Puglia vs. An<br>opre | Ufr Anno P | Polarità | Unità di<br>misura                   |
|----------------------------------------------------------------------------------------------------------|--------|-------|--------|-------|--------|-----------------------|------------|----------|--------------------------------------|
| Probabilità di morte sotto i 5 anni                                                                      | 3,44   | 3,88  | 3,3    | -0,44 | 0,14   | 0,02                  | 2020       | -        | Per 1.000 nati vivi                  |
| Tasso di mortalità neonatale                                                                             | 2,49   | 2,74  | 1,92   | -0,25 | 0,57   | 0,66                  | 2018       | -        | Per 1.000 nati vivi                  |
| Incidenza delle infezioni da HIV per 100.000 residenti (per regione di residenza)                        | 4,2    | 3     | 4      | 1,2   | 0,2    | 0,1                   | 2019       | -        | Per 100.000 abitanti                 |
| Probabilità di morire tra i 30 ed i 69 anni per tumori, diabete, malattie cardiovascolari e respiratorie | 8,74   | 9,83  | 8,96   | -1,09 | -0,22  | -0,12                 | 2018       | -        | Valori percentuali                   |
| Speranza di vita in buona salute alla nascita                                                            | 61,7   | 58,9  | 61     | 2,8   | 0,7    | 3,9                   | 2020       | +        | Numero medio di anni                 |
| Eccesso di peso                                                                                          | 48,6   | 50,7  | 45,9   | -2,1  | 2,7    | -2,4                  | 2020       | -        | Tassi standardizzati per 100 persone |
| Tasso standardizzato di mortalità per suicidio                                                           | 4,8    | 4,5   | 5,7    | 0,3   | -0,9   | 0,2                   | 2018       | -        | Per 100.000 abitanti                 |
| Alcol                                                                                                    | 16,2   | 13,7  | 16,7   | 2,5   | -0,5   | 1,7                   | 2020       | -        | Tassi standardizzati per 100 persone |
| Tasso di mortalità per incidente stradale                                                                | 4      | 3,7   | 3,9    | 0,3   | 0,1    | -1,2                  | 2020       | -        | Per 100.000 abitanti                 |
| Numero morti in incidente stradale                                                                       | 160    | 755   | 2395   |       |        | -47                   | 2020       | -        | Numero                               |

|                                                                                  |       |       |       |       |       |      |      |   |                                      |
|----------------------------------------------------------------------------------|-------|-------|-------|-------|-------|------|------|---|--------------------------------------|
| Tasso di lesività grave in incidente stradale                                    | 25,6  | 22,4  | 23,7  | 3,2   | 1,9   | -7   | 2020 | - | Per 100.000 abitanti                 |
| Domanda di contraccezione soddisfatta con metodi moderni                         | 55,2  | 60,4  | 67,2  | -5,2  | -12   |      | 2013 | + | Valori percentuali                   |
| Quozienti specifici di fecondità per età per 1.000 donne tra i 10 e i 14 anni    | 0,053 | 0,021 | 0,015 | 0,032 | 0,038 | 0    | 2020 | - | Per 1.000 abitanti                   |
| Quozienti specifici di fecondita' per eta' per 1000 donne tra i 15 e i 19 anni   | 21,8  | 24,5  | 16,2  | -2,7  | 5,6   | -3,1 | 2020 | - | Per 1.000 abitanti                   |
| Posti letto in degenza ordinaria in istituti di cura pubblici e privati          | 29,2  | 27,8  | 31,3  | 1,4   | -2,1  | 0,3  | 2019 | + | Per 10.000 abitanti                  |
| Posti letto in day-Hospital negli istituti di cura pubblici e privati            | 2,1   | 3,7   | 3,4   | -1,6  | -1,3  | 0    | 2019 | + | Per 10.000 abitanti                  |
| Posti letto nei presidi residenziali socio-assistenziali e socio-sanitari        | 36,4  | 38,6  | 69,6  | -2,2  | -33,2 | -0,1 | 2018 | + | Per 10.000 abitanti                  |
| Percentuale dei parti con piu' di 4 visite di controllo effettuate in gravidanza | 90,2  |       | 89,4  |       | 1,5   | 2,5  | 2020 | + | Valori percentuali                   |
| Ipertensione arteriosa (tassi standardizzati)                                    | 20,7  | 21,5  | 19,4  | -0,8  | 1,3   | 0,2  | 2020 | - | Tassi standardizzati per 100 persone |
| Diabete (tassi standardizzati)                                                   | 6,4   | 7,6   | 6,2   | -1,2  | 0,2   | -1,1 | 2020 | - | Tassi standardizzati per 100 persone |
| Tasso standardizzato di mortalità per avvelenamento accidentale                  | 0,51  | 0,39  | 0,5   | 0,12  | 0,01  | 0,24 | 2018 | - | Per 100.000 abitanti                 |
| Persone che dichiarano di fumare attualmente (15 anni e piu')                    | 16,8  | 18,6  | 19,1  | -1,8  | -2,3  | -0,6 | 2020 | - | Valori percentuali                   |
| Copertura vaccinale antinfluenzale età 65+                                       | 61,1  |       | 66,5  |       | -5,4  | 9,7  | 2021 | + | Per 100 abitanti                     |
| Copertura vaccinale in età pediatrica: polio                                     | 93,7  |       | 94    |       | -0,3  | -0,8 | 202  | + | Per 100 abitanti                     |

|                                                 |           |           |           |           |          |                 |      |   |                    |
|-------------------------------------------------|-----------|-----------|-----------|-----------|----------|-----------------|------|---|--------------------|
|                                                 |           |           |           |           |          |                 | 0    |   |                    |
| Copertura vaccinale in età pediatrica: morbillo | 93,3      |           | 92,7      |           | 0,6      | -1,1            | 2019 | + | Per 100 abitanti   |
| Copertura vaccinale in età pediatrica: rosolia  | 93,3      |           | 92,2      |           | 1,1      | -1,1            | 2019 | + | Per 100 abitanti   |
| Medici                                          | 3,8       | 4         | 4         | -0,2      | -0,2     | 0               | 2020 | + | Per 1.000 abitanti |
| Infermieri e ostetriche                         | 6,9       | 6,2       | 6,5       | 0,7       | 0,4      | 0,8             | 2019 | + | Per 1.000 abitanti |
| Dentisti                                        | 0,8       | 0,8       | 0,9       | 0         | -0,1     | 0               | 2019 | + | Per 1.000 abitanti |
| Farmacisti                                      | 1,1       | 1,2       | 1,3       | -0,1      | -0,2     | 0               | 2019 | + | Per 1.000 abitanti |
| <b>Totale indicatori confrontabili</b>          | <b>30</b> | <b>25</b> | <b>30</b> | <b>12</b> | <b>8</b> | <b>14 su 29</b> |      |   |                    |



#### Goal 4 - Ensure inclusive and equitable quality education and promote lifelong learning opportunities for all

| INDICATORE                                                                                                                         | Puglia | Mezzo | Italia | PvSM | PvStta | PugliavsAnnoPRE | Ult Anno P | Polarità | Unità di misura    |
|------------------------------------------------------------------------------------------------------------------------------------|--------|-------|--------|------|--------|-----------------|------------|----------|--------------------|
| Competenza alfabetica non adeguata (studenti classi III scuola secondaria primo grado)                                             | 42,7   | 47,1  | 39,2   | -4,4 | 3,5    | 7,5             | 2021       | -        | Valori percentuali |
| Competenza numerica non adeguata (studenti classi III scuola secondaria primo grado)                                               | 50     | 57    | 45,2   | -7   | 4,8    | 8,7             | 2021       | -        | Valori percentuali |
| Comprensione all'ascolto (listening) della lingua inglese non adeguata (studenti classi III scuola secondaria primo grado)         | 51,6   | 56,7  | 40,9   | -5,1 | 10,7   | 0,2             | 2021       | -        | Valori percentuali |
| Comprensione della lettura (reading) della lingua inglese non adeguata (studenti classi III scuola secondaria primo grado)         | 31,3   | 35    | 24,1   | -3,7 | 7,2    | 5,1             | 2021       | -        | Valori percentuali |
| Competenza alfabetica non adeguata (studenti classi II scuola secondaria secondo grado)                                            | 39,6   | 41,9  | 30,4   | -2,3 | 9,2    | -1,7            | 2019       | -        | Valori percentuali |
| Competenza numerica non adeguata (studenti classi II scuola secondaria secondo grado)                                              | 47,8   | 53,5  | 37,8   | -5,7 | 10     | -4,4            | 2019       | -        | Valori percentuali |
| Competenza alfabetica non adeguata (studenti classi V scuola secondaria secondo grado)                                             | 59,3   | 59,5  | 43,9   | -0,2 | 15,4   | 17,3            | 2021       | -        | Valori percentuali |
| Competenza numerica non adeguata (studenti classi V scuola secondaria secondo grado)                                               | 69,2   | 69,3  | 51     | -0,1 | 18,2   | 21,1            | 2021       | -        | Valori percentuali |
| Comprensione all'ascolto (listening) della lingua inglese non adeguata (studenti classi V scuola secondaria secondo grado)         | 41,6   | 42,4  | 25,2   | -0,8 | 16,4   | 6,3             | 2021       | -        | Valori percentuali |
| Comprensione della lettura (reading) della lingua inglese non adeguata (studenti classi V scuola secondaria secondo grado)         | 20,9   | 21,8  | 12,9   | -0,9 | 8      | 6,3             | 2021       | -        | Valori percentuali |
| Uscita precoce dal sistema di istruzione e formazione                                                                              | 15,6   | 16,3  | 13,1   | -0,7 | 2,5    | -2,3            | 2020       | -        | Valori percentuali |
| Posti autorizzati nei servizi socio educativi (asili nido e servizi integrativi per la prima infanzia) per 100 bambini di 0-2 anni | 18,9   | 14,9  | 26,9   | 4    | -8     | 2,1             | 2019       | +        | Valori percentuali |

|                                                                                                                    |           |           |           |           |          |                 |      |   |                                   |
|--------------------------------------------------------------------------------------------------------------------|-----------|-----------|-----------|-----------|----------|-----------------|------|---|-----------------------------------|
| Tasso di partecipazione alle attività educative (scuola dell'infanzia e primo anno della primaria) per i 5-enni    | 99,6      | 99,5      | 96,5      | 0,1       | 3,1      | 0,3             | 2019 | + | Valori percentuali                |
| Partecipazione alla formazione continua                                                                            | 5,5       | 5,7       | 7,2       | -0,2      | -1,7     | -0,3            | 2020 | + | Valori percentuali                |
| Persone di 25-64 anni che hanno partecipato ad attività di istruzione e formazione nei 12 mesi precedenti          | 31,9      | 32,2      | 41,5      | -0,3      | -9,6     |                 | 2016 | + | Valori percentuali                |
| Alunni con disabilità: scuola dell'infanzia                                                                        | 2,2       |           | 2,4       |           | -0,2     | 0,3             | 2019 | + | Valori percentuali                |
| Alunni con disabilità: scuola primaria                                                                             | 3,6       |           | 3,8       |           | -0,2     | 0,3             | 2019 | + | Valori percentuali                |
| Alunni con disabilità: scuola secondaria di primo grado                                                            | 4         |           | 4,2       |           | -0,2     | 0,1             | 2019 | + | Valori percentuali                |
| Alunni con disabilità: scuola secondaria di secondo grado                                                          | 3         |           | 2,7       |           | 0,3      | 0,1             | 2019 | + | Valori percentuali                |
| Competenze digitali almeno di base                                                                                 | 33,9      |           | 41,5      |           | -7,6     | 2               | 2019 | + | Valori percentuali                |
| Competenze digitali elevate                                                                                        | 18        | 17,2      | 22        | 0,8       | -4       | 5               | 2019 | + | Valori percentuali                |
| Laureati e altri titoli terziari (30-34 anni)                                                                      | 19,8      | 21,3      | 27,8      | -1,5      | -8       | -0,2            | 2020 | + | Valori percentuali                |
| Laureati in discipline tecnico-scientifiche (STEM)                                                                 | 14,5      | 14,2      | 15,1      | 0,3       | -0,6     | 0,9             | 2018 | + | Per 1.000 residenti di 20-29 anni |
| Scuole accessibili dal punto di vista fisico                                                                       | 32,4      | 27,4      | 32,3      | 5         | 0,1      | -2,4            | 2020 | + | Valori percentuali                |
| Scuole non accessibili dal punto di vista fisico                                                                   | 47,1      | 49,9      | 46,8      | -2,8      | 0,3      | -2,5            | 2020 | - | Valori percentuali                |
| Scuole con alunni con disabilità per presenza postazioni informatiche adattate: scuola primaria                    | 76,4      |           | 75,1      |           | 1,3      | -0,4            | 2020 | + | Valori percentuali                |
| Scuole con alunni con disabilità per presenza postazioni informatiche adattate: scuola secondaria di primo grado   | 79,9      |           | 79,2      |           | 0,7      | 1               | 2020 | + | Valori percentuali                |
| Scuole con alunni con disabilità per presenza postazioni informatiche adattate: scuola secondaria di secondo grado | 76,7      |           | 78,1      |           | -1,4     | 2,3             | 2020 | + | Valori percentuali                |
| <b>Totale indicatori confrontabili</b>                                                                             | <b>34</b> | <b>24</b> | <b>34</b> | <b>19</b> | <b>9</b> | <b>21 su 34</b> |      |   |                                   |





## Goal 5 - Achieve gender equality and empower all women and girls

| INDICATORE                                                                                                                    | Puglia    | Mezzo     | Italia    | PvSM     | PvsIta    | PugliavsAnnopre   | Ult Anno P | Polarità | Unità di misura       |
|-------------------------------------------------------------------------------------------------------------------------------|-----------|-----------|-----------|----------|-----------|-------------------|------------|----------|-----------------------|
| Violenza nella coppia                                                                                                         | 4,6       | 4,9       | 4,9       | -0,3     | -0,3      |                   | 201        | -        | Valori                |
| Donne vittime di violenze segnalate al numero di pubblica utilità contro la violenza e lo stalking 1522                       | 40,5<br>3 |           | 49,6<br>1 |          | -<br>9,08 | 17,7<br>3         | 202<br>0   | -        | Per 100.000<br>donne  |
| Centri antiviolenza e case rifugio: tasso per 100.000 donne di 14 anni e più                                                  | 1,72      | 1,41      | 1,98      | 0,31     | -         | -                 | 201        | +        | Per 100.000           |
| Centri antiviolenza: tasso per 100.000 donne di 14 anni e più                                                                 | 1,05      | 0,96      | 1,04      | 0,09     | 0,01      | -                 | 201        | +        | Per 100.000           |
| Case rifugio: tasso per 100.000 donne di 14 anni e più                                                                        | 0,66      | 0,45      | 0,95      | 0,21     | -         | 0,22              | 201        | +        | Per 100.000           |
| Proporzione di donne dai 16 ai 70 anni che hanno subito violenza fisica o sessuale da un uomo non partner negli ultimi 5 anni | 7,2       |           | 7,7       |          | -0,5      |                   | 201<br>4   | -        | Valori<br>percentuali |
| Rapporto tra i tassi di occupazione (25-49 anni) delle donne con figli in età prescolare e delle donne senza figli            | 69,2      | 67,5      | 73,4      | 1,7      | -4,2      | -5,3              | 202        | +        | Valori                |
| Quota di tempo dedicato al lavoro non retribuito, domestico e di cura                                                         | 13,6      | 14        | 13,5      | -0,4     | 0,1       |                   | 201        | -        | Valori                |
| Donne e rappresentanza politica in Parlamento                                                                                 | 41,3      | 37,4      | 35,4      | 3,9      | 5,9       | 21,9              | 201        | +        | Valori                |
| Donne e rappresentanza politica a livello locale                                                                              | 13,7      | 16,7      | 22,3      | -3       | -8,6      | 0                 | 202        | +        | Valori                |
| Tasso di abortività volontaria delle donne di 15-49 anni per 1.000 donne                                                      | 6,2       | 4,8       | 5,1       | 1,4      | 1,1       | -1                | 202        | -        | Per 1.000 donne       |
| Persone di 6 anni e più che usano il cellulare almeno tutti i giorni, per 100 persone con le stesse caratteristiche           | 85,1      | 82,8      | 82,6      | 2,3      | 2,5       | 1,8               | 202<br>0   | +        | Valori<br>percentuali |
| <b>Totale indicatori confrontabili</b>                                                                                        | <b>12</b> | <b>10</b> | <b>12</b> | <b>8</b> | <b>6</b>  | <b>4 su<br/>9</b> |            |          |                       |



## Goal 6 - Ensure availability and sustainable management of water and sanitation for all

| INDICATORE                                                                                                                                                              | Puglia   | Mezzo    | Italia   | PvsM     | PvsIta   | PugliavsAnnopre | Ult Anno P | Polarità | Unità di misura           |
|-------------------------------------------------------------------------------------------------------------------------------------------------------------------------|----------|----------|----------|----------|----------|-----------------|------------|----------|---------------------------|
| Acqua erogata pro capite                                                                                                                                                | 152      | 199      | 215      | -47      | -63      | -3              | 2018       | +        | Lt pro capite per giorno  |
| Famiglie che non si fidano di bere l'acqua del rubinetto                                                                                                                | 33,2     | 40,4     | 28,4     | -7,2     | 4,8      | 5,7             | 2020       | -        | Valori percentuali        |
| Irregolarità nella distribuzione dell'acqua                                                                                                                             | 7,6      | 17,6     | 8,9      | -10      | -1,3     | -0,2            | 2020       | -        | Valori percentuali        |
| Trattamento delle acque reflue                                                                                                                                          | 68,3     | 56,7     | 59,6     | 11,6     | 8,7      | 2               | 2015       | +        | Valori percentuali        |
| <i>Acque reflue urbane con trattamento secondario o avanzato</i>                                                                                                        | 182      |          |          |          |          | -2              | 2018       | +        | N.                        |
| Copertura del servizio pubblico di fognatura                                                                                                                            | 92,3     | 86,3     | 87,8     | 6        | 4,5      |                 | 2018       | +        | Valori percentuali        |
| Coste marine balneabili                                                                                                                                                 | 74,7     | 65,8     | 65,5     | 8,9      | 9,2      | 0               | 2019       | +        | Valori percentuali        |
| Percentuale di corpi idrici che hanno raggiunto l'obiettivo di qualità ecologica (elevata o buona) sul totale dei corpi idrici delle acque superficiali (fiumi e laghi) | 6,4      |          | 41,7     |          | -35,3    |                 | 2015       | +        | Valori percentuali        |
| Efficienza delle reti di distribuzione dell'acqua potabile                                                                                                              | 54,9     | 52,1     | 58       | 2,8      | -3,1     | 0,8             | 2018       | +        | Valori percentuali        |
| <i>Prelievi di acqua per uso potabile</i>                                                                                                                               | 171,5    |          |          |          |          | -2,3            | 2018       | +        | Milioni di m <sup>3</sup> |
| Zone umide di importanza internazionale                                                                                                                                 | 5431     |          |          |          |          | 0               | 2018       | +        | Ha                        |
| <b>Totale indicatori confrontabili</b>                                                                                                                                  | <b>9</b> | <b>8</b> | <b>9</b> | <b>6</b> | <b>4</b> | <b>7 su 11</b>  |            |          |                           |



## Goal 7 - Ensure access to affordable, reliable, sustainable and modern energy for all

| INDICATORE                                                                                                             | Puglia   | Mezzo    | Italia   | PvsM     | PvsIta   | PugliavsAnnopre | Ult Anno P | Polarità | Unità di misura         |
|------------------------------------------------------------------------------------------------------------------------|----------|----------|----------|----------|----------|-----------------|------------|----------|-------------------------|
| Famiglie molto o abbastanza soddisfatte per la continuità del servizio elettrico                                       | 93,4     | 92,1     | 94,2     | 1,3      | -0,8     | 0,6             | 2020       | +        | Valori percentuali      |
| Quota di energia da fonti rinnovabili sul consumo finale lordo di energia                                              | 18       |          | 18,2     |          | -0,2     | 0,5             | 2019       | +        | Valori percentuali      |
| Consumi di energia da fonti rinnovabili (escluso settore trasporti) in percentuale del consumo finale lordo di energia | 16,9     |          | 17,1     |          | -0,2     | 0,4             | 2019       | +        | Valori percentuali      |
| Consumi di energia da fonti rinnovabili nel settore termico (in percentuale del consumo finale lordo di energia)       | 10,5     |          | 19,7     |          | -9,2     | 0,5             | 2019       | +        | Valori percentuali      |
| Energia elettrica da fonti rinnovabili                                                                                 | 54,7     | 45,6     | 37,4     | 9,1      | 17,3     | 2,7             | 2020       | +        | Valori percentuali      |
| Consumi di energia da fonti rinnovabili nel settore trasporti (in percentuale del consumo finale lordo di energia)     | 8,8      |          | 9        |          | -0,2     | 1,4             | 2019       | +        | Valori percentuali      |
| Intensità energetica                                                                                                   | 153,29   |          | 91,51    |          | 61,78    | -6,73           | 2019       | -        | TEP per milione di euro |
| Intensità energetica del settore Industria                                                                             | 153,29   |          | 92,13    |          | 61,16    | -40,04          | 2019       | -        | TEP per milione di euro |
| <b>Totale indicatori confrontabili</b>                                                                                 | <b>8</b> | <b>2</b> | <b>8</b> | <b>2</b> | <b>1</b> | <b>8 su 8</b>   |            |          |                         |



## Goal 8 - Promote sustained, inclusive and sustainable economic growth, full and productive employment and decent work for all

| INDICATORE                                                             | Puglia | Mezzo | Italia | PvsM   | PvsIta | Puglia vs Anni<br>e | Ult Anno P | Polarità | Unità di misura           |
|------------------------------------------------------------------------|--------|-------|--------|--------|--------|---------------------|------------|----------|---------------------------|
| Tasso di crescita annuo del Pil reale per abitante                     | -7,8   | -7,7  | -8,5   | -0,1   | 0,7    | -8,3                | 2020       | +        | Valori percentuali        |
| Tasso di crescita annuo del Pil reale per occupato                     | -7,1   | -6,5  | -7     | -0,6   | -0,1   | -6,6                | 2020       | +        | Valori percentuali        |
| Tasso di crescita annuo del valore aggiunto in volume per occupato     | -6,9   | -6,2  | -6,8   | -0,7   | -0,1   | -6,4                | 2020       | +        | Valori percentuali        |
| Tasso di crescita annuo del valore aggiunto in volume per ora lavorata | 0,9    | 0,3   | 0,4    | 0,6    | 0,5    | -0,4                | 2019       | +        | Valori percentuali        |
| Occupati non regolari                                                  | 15,9   | 17,5  | 12,6   | -1,6   | 3,3    | -0,2                | 2019       | -        | Valori percentuali        |
| Consumo materiale interno pro capite                                   | 10,5   | 7,3   | 8,1    | 3,2    | 2,4    | 0                   | 2018       | -        | Tonnellate per abitante   |
| Consumo materiale interno per unità di Pil                             | 0,58   | 0,39  | 0,28   | 0,19   | 0,3    | 0                   | 2018       | -        | Tonnellate per 1.000 euro |
| Consumo materiale interno                                              | 41,9   | 149,7 | 487,8  | -107,8 | -445,9 | 0                   | 2018       | -        | Milioni di tonnellate     |
| Dipendenti con bassa paga                                              | 17,6   | 15,3  | 10,1   | 2,3    | 7,5    | 0,6                 | 2020       | -        | Valori percentuali        |
| Tasso di disoccupazione                                                | 14,1   | 15,9  | 9,2    | -1,8   | 4,9    | -0,8                | 2020       | -        | Valori percentuali        |
| Tasso di mancata partecipazione al lavoro                              | 29,9   | 33,5  | 19     | -3,6   | 10,9   | -0,2                | 2020       | -        | Valori percentuali        |
| Tasso di occupazione (20-64 anni)                                      | 50     | 48    | 62,6   | 2      | -12,6  | -0,2                | 2020       | +        | Valori percentuali        |
| Part time involontario                                                 | 13,5   | 14,5  | 11,9   | -1     | 1,6    | 0,2                 | 2020       | -        | Valori percentuali        |
| Occupati in lavori a termine da almeno 5 anni                          | 24,6   | 24,5  | 18,2   | 0,1    | 6,4    | -1,3                | 2020       | -        | Valori percentuali        |
| Giovani che non lavorano e non studiano (NEET) (15-24 anni)            | 22,7   | 25,7  | 19     | -3     | 3,7    | -0,9                | 2020       | -        | Valori percentuali        |
| Giovani che non lavorano e non studiano (NEET)                         | 29,4   | 32,6  | 23,3   | -3,2   | 6,1    | -0,3                | 2020       | -        | Valori percentuali        |

|                                                    |           |           |           |           |          |                |      |   |                      |
|----------------------------------------------------|-----------|-----------|-----------|-----------|----------|----------------|------|---|----------------------|
| Tasso di infortuni mortali e inabilità permanente  | 12        | 12,9      | 10,8      | -0,9      | 1,2      | -0,9           | 2019 | - | Per 10.000 occupati  |
| Numero di sportelli operativi per 100.000 abitanti | 27,1      | 26,1      | 40,6      | 1         | -13,5    | -1,4           | 2019 | + | Per 100.000 abitanti |
| Numero di ATM per 100.000 abitanti                 | 45,2      | 43,1      | 66        | 2,1       | -20,8    | 0              | 2019 | + | Per 100.000 abitanti |
| Numero di banche per 100.000 abitanti              | 0,7       | 0,5       | 0,8       | 0,2       | -0,1     | 0              | 2019 | + | Per 100.000 abitanti |
| <b>Totale indicatori confrontabili</b>             | <b>20</b> | <b>20</b> | <b>20</b> | <b>13</b> | <b>3</b> | <b>7 su 20</b> |      |   |                      |



## Goal 9 - Build resilient infrastructure, promote inclusive and sustainable industrialization and foster innovation

| INDICATORE                                                                                              | Puglia    | Mezzo     | Italia    | PvsM     | PvsIta   | PugliavsAnnopre | Ult Anno P | Polarità | Unità di misura                |
|---------------------------------------------------------------------------------------------------------|-----------|-----------|-----------|----------|----------|-----------------|------------|----------|--------------------------------|
| Valore aggiunto dell'industria manifatturiera per abitante                                              | 1615,79   | 1504,03   | 4300,71   | 111,76   | -2684,92 | -69,97          | 2019       | +        | Euro (valori concatenati) x ab |
| Valore aggiunto dell'industria manifatturiera rispetto al totale economia                               | 9,6       | 8,9       | 16,6      | 0,7      | -7       | -0,5            | 2019       | +        | Valori percentuali             |
| Occupazione nell'industria manifatturiera rispetto al totale economia                                   | 11,5      | 9,8       | 15,5      | 1,7      | -4       | 0               | 2019       | +        | Valori percentuali             |
| Quota di valore aggiunto delle piccole imprese manifatturiere sul valore aggiunto manifatturiero totale | 50,5      | 48,8      | 41,9      | 1,7      | 8,6      | 1,6             | 2018       | +        | Valori percentuali             |
| Percentuale di piccole imprese con almeno un rapporto creditizio                                        | 47        |           |           |          |          |                 | 2018       | +        | Valori percentuali             |
| Intensità di ricerca                                                                                    | 0,82      | 0,96      | 1,46      | -0,14    | -0,64    | 0,03            | 2019       | +        | Valori percentuali             |
| Imprese con attività innovative di prodotto e/o processo (per 100 imprese)                              | 49,1      | 48,1      | 55,6      | 1        | -6,5     | 18,5            | 2018       | +        | Valori percentuali             |
| Ricercatori (in equivalente tempo pieno)                                                                | 13,1      | 14,6      | 26,9      | -1,5     | -13,8    | 1,1             | 2019       | +        | Per 10.000 abitanti            |
| Lavoratori della conoscenza                                                                             | 16,4      | 17,4      | 18,2      | -1       | -1,8     | 0,2             | 2020       | +        | Per 100 occupati               |
| Percentuale di valore aggiunto delle imprese MHT rispetto al valore aggiunto manifatturiero             | 22,7      | 23,5      | 32,1      | -0,8     | -9,4     | 1,9             | 2018       | +        | Valori percentuali             |
| Famiglie con connessione a banda larga fissa e/o mobile                                                 | 70,5      | 72,5      | 77,8      | -2       | -7,3     | 2,1             | 2020       | +        | Valori percentuali             |
| Imprese con almeno 10 addetti con vendite via web a clienti finali                                      | 13,1      | 15,5      | 14        | -2,4     | -0,9     | 3,2             | 2021       | +        | Valori percentuali             |
| Imprese con almeno 10 addetti con vendite via web alle imprese e alle istituzioni pubbliche             | 10,8      | 10,4      | 8,6       | 0,4      | 2,2      | 3,2             | 2021       | +        | Valori percentuali             |
| <b>Totale indicatori confrontabili</b>                                                                  | <b>13</b> | <b>12</b> | <b>12</b> | <b>6</b> | <b>2</b> | <b>9 su 12</b>  |            |          |                                |



### Goal 10: Reduce inequality within and among countries

| INDICATORE                                                                                    | Puglia       | Mezzo    | Italia   | Pvsm     | Pvsita   | Puglia vs Annapr<br>e | Ult Anno P  | Polarità | Unità di misura        |
|-----------------------------------------------------------------------------------------------|--------------|----------|----------|----------|----------|-----------------------|-------------|----------|------------------------|
| Tasso di variazione del reddito familiare pro capite per il 40% piu' povero della popolazione | -4,56        | 0,34     | 1,87     | -4,9     | -6,43    | -2,63                 | 2018        | -        | Valori percentuali     |
| Tasso di variazione del reddito familiare pro capite per il totale della popolazione          | -2,1         | 1,74     | 0,27     | -3,84    | -2,37    | 0,39                  | 2018        | -        | Valori percentuali     |
| Disuguaglianza del reddito netto (s80/s20)                                                    | 6,2          | 7,2      | 6        | -1       | 0,2      | 0,6                   | 2018        | -        | Numero puro            |
| Reddito disponibile lordo pro capite                                                          | 14620,2      | 14328,9  | 18804,5  | 291,3    | -4184,3  | -86,2                 | 2020        | +        | Euro (prezzi correnti) |
| Rischio di povertà                                                                            | 30,4         | 34,7     | 20,1     | -4,3     | 10,3     | 3,6                   | 2019        | -        | Valori percentuali     |
| <i>Permessi emessi per cittadini non Ue</i>                                                   | <i>82268</i> |          |          |          |          | <i>-6452</i>          | <i>2020</i> | <i>+</i> | <i>N.</i>              |
| Quota di permessi di lungo periodo                                                            | 56           | 54,6     | 63,1     | 1,4      | -7,1     | 3,9                   | 2020        | +        | Valori percentuali     |
| <i>Nuovi permessi rilasciati</i>                                                              | <i>4909</i>  |          |          |          |          | <i>-2900</i>          | <i>2019</i> | <i>+</i> | <i>N.</i>              |
| Quota di permessi rilasciati per asilo politico e motivi umanitari                            | 19,1         | 25,5     | 15,6     | -6,4     | 3,5      | -30,7                 | 2019        | +        | Valori percentuali     |
| <i>Acquisizioni di cittadinanza</i>                                                           | <i>2419</i>  |          |          |          |          | <i>858</i>            | <i>2019</i> | <i>+</i> | <i>N.</i>              |
| <b>Totale indicatori confrontabili</b>                                                        | <b>10</b>    | <b>7</b> | <b>7</b> | <b>6</b> | <b>3</b> | <b>3 su 10</b>        |             |          |                        |



## Goal 11: Make cities and human settlements inclusive, safe, resilient and sustainable

| INDICATORE                                                                                        | Puglia | Mezzo | Italia | PvsM | PvsIta | Puglia vs A<br>nno pre | Ult Anno P | Polarità | Unità di<br>misura                    |
|---------------------------------------------------------------------------------------------------|--------|-------|--------|------|--------|------------------------|------------|----------|---------------------------------------|
| Percentuale di persone che vivono in abitazioni con problemi strutturali o problemi di umidità    | 13     | 15,5  | 14     | -2,5 | -1     | 0,9                    | 2019       | -        | Valori percentuali                    |
| Percentuale di persone che vivono in abitazioni sovraffollate                                     | 23,6   | 28    | 28,3   | -4,4 | -4,7   | -2,9                   | 2019       | -        | Valori percentuali                    |
| Percentuale di persone che vivono in abitazioni con rumore dai vicini o dalla strada              | 14,5   | 11,4  | 11,9   | 3,1  | 2,6    | 3,9                    | 2019       | -        | Valori percentuali                    |
| Famiglie che dichiarano difficoltà di collegamento con mezzi pubblici nella zona in cui risiedono | 30     | 36,4  | 30,2   | -6,4 | -0,2   | -0,6                   | 2020       | -        | Valori percentuali                    |
| Studenti che si spostano abitualmente per raggiungere il luogo di studio solo con mezzi pubblici  | 19,9   | 23,1  | 26,8   | -3,2 | -6,9   | -7                     | 2020       | +        | Valori percentuali                    |
| Persone che si spostano abitualmente per raggiungere il luogo di lavoro solo con mezzi privati    | 77,4   | 76,2  | 75     | 1,2  | 2,4    | 3,5                    | 2020       | -        | Valori percentuali                    |
| Posti-km offerti dal Tpl                                                                          | 1952   | 1946  | 4624   | 6    | -2672  | -171                   | 2019       | +        | Valori per<br>abitante                |
| Utenti assidui dei mezzi pubblici                                                                 | 8,4    | 9,1   | 12,5   | -0,7 | -4,1   | -1,1                   | 2020       | +        | Valori percentuali                    |
| Impermeabilizzazione e consumo di suolo pro capite                                                | 399    |       | 359    |      | 40     | 4                      | 2020       | -        | M2 per abitante                       |
| Abusivismo edilizio                                                                               | 33,7   | 38,4  | 15,1   | -4,7 | 18,6   | -4,6                   | 2021       | -        | Per 100<br>costruzioni<br>autorizzate |
| Popolazione esposta al rischio di alluvioni                                                       | 3,4    | 5,2   | 11,4   | -1,8 | -8     | 0,7                    | 2020       | -        | Valori percentuali                    |
| Popolazione esposta al rischio di frane                                                           | 1,5    | 3,2   | 2,2    | -1,7 | -0,7   | 0,2                    | 2020       | -        | Valori percentuali                    |



|                                                                                                   |           |           |           |          |          |                |      |   |                                         |
|---------------------------------------------------------------------------------------------------|-----------|-----------|-----------|----------|----------|----------------|------|---|-----------------------------------------|
| Conferimento dei rifiuti urbani in discarica                                                      | 33,7      | 29,2      | 20,1      | 4,5      | 13,6     | -2,3           | 2020 | - | Valori percentuali                      |
| Rifiuti urbani raccolti                                                                           | 469       | 442       | 487       | 27       | -18      | -3             | 2020 | - | Kg per abitante                         |
| Qualità dell'aria - PM2.5                                                                         | 83        | 61,8      | 77,4      | 21,2     | 5,6      | -9             | 2020 | - | Valori percentuali                      |
| Incidenza delle aree di verde urbano sulla superficie urbanizzata delle città                     | 3,3       | 5,5       | 8,5       | -2,2     | -5,2     | 0              | 2020 | + | M2 per 100 m2 di superficie urbanizzata |
| Persone di 14-65 anni che hanno subito almeno una molestia a sfondo sessuale negli ultimi 12 mesi | 5         |           | 5,1       |          | -0,1     |                | 2016 | - | Valori percentuali                      |
| <b>Totale indicatori confrontabili</b>                                                            | <b>17</b> | <b>15</b> | <b>17</b> | <b>7</b> | <b>7</b> | <b>5 su 16</b> |      |   |                                         |



## Goal 12: Ensure sustainable consumption and production patterns

| INDICATORE                                                                                                                  | Puglia    | Mezzo | Italia | PvSM | PvsIta | Puglia vs Annapr<br>e | Ult Anno P | Polarità | Unità di misura           |
|-----------------------------------------------------------------------------------------------------------------------------|-----------|-------|--------|------|--------|-----------------------|------------|----------|---------------------------|
| Consumo materiale interno pro capite                                                                                        | 10,5      | 7,3   | 7,7    | 3,2  | 2,8    | 0                     | 2018       | -        | Tonnellate per abitante   |
| Consumo materiale interno per unità di Pil                                                                                  | 0,58      | 0,39  | 0,29   | 0,19 | 0,29   | 0                     | 2018       | -        | Tonnellate per 1.000 euro |
| Consumo materiale interno                                                                                                   | 41,9      |       |        |      |        | 0                     | 2018       | -        | Milioni di tonnellate     |
| Produzione di rifiuti speciali pericolosi                                                                                   | 386.684   |       |        |      |        | 18.421                | 2019       | -        | Tonnellate                |
| Rifiuti speciali pericolosi avviati alle operazioni di recupero                                                             | 194.111   |       |        |      |        | 23.871                | 2019       | +        | Tonnellate                |
| Rifiuti pericolosi avviati a operazioni di smaltimento                                                                      | 60.382    |       |        |      |        | -11.746               | 2019       | -        | Tonnellate                |
| Ammontare di rifiuti urbani oggetto di raccolta differenziata                                                               | 1.008.424 |       |        |      |        | 61.601                | 2020       | +        | Tonnellate                |
| Raccolta differenziata dei rifiuti urbani                                                                                   | 54,5      | 53,6  | 63     | 0,9  | -8,5   | 3,9                   | 2020       | +        | Valori percentuali        |
| Rifiuti urbani raccolti                                                                                                     | 469       | 442   | 487    | 27   | -18    | -3                    | 2020       | -        | Kg per abitante           |
| Percentuale di imprese con almeno 3 addetti che redigono bilanci e/o rendicontazioni ambientali e di sostenibilità          | 3,2       | 3,4   | 2,5    | -0,2 | 0,7    |                       | 2018       | +        | Valori percentuali        |
| Percentuale di imprese con almeno 3 addetti che acquisiscono certificazioni ambientali volontarie di prodotto o di processo | 9,1       | 9,9   | 8,2    | -0,8 | 0,9    |                       | 2018       | +        | Valori percentuali        |
| Istituzioni pubbliche che adottano forme di rendicontazione sociale e/o ambientale                                          | 21,2      |       | 16,1   |      | 5,1    | -4,3                  | 2017       | +        | Valori percentuali        |
| Numero di organizzazioni/imprese registrate EMAS                                                                            | 40        |       |        |      |        | 2                     | 2020       | +        | N.                        |

|                                                                                                                                                                                                 |           |          |           |          |          |                |      |   |                             |
|-------------------------------------------------------------------------------------------------------------------------------------------------------------------------------------------------|-----------|----------|-----------|----------|----------|----------------|------|---|-----------------------------|
| Numero di unità locali con Certificazione di sistemi di gestione ambientale UNI EN ISO 14001                                                                                                    | 877       |          |           |          |          | 55             | 2019 | + | N.                          |
| Numero di unità locali con Certificazione di gestione dell'energia UNI CEI EN ISO 50001                                                                                                         | 34        |          |           |          |          | -15            | 2019 | + | N.                          |
| Percentuale di istituzioni pubbliche che acquistano beni e/o servizi adottando criteri ambientali minimi (CAM), in almeno una procedura di acquisto (Acquisti verdi o Green Public Procurement) | 59,9      |          | 63,2      |          | -3,3     |                | 2015 | + | Valori percentuali          |
| Incidenza del turismo sui rifiuti                                                                                                                                                               | 4,88      |          | 9,71      |          | -4,83    | 0,06           | 2019 | - | Kg per abitante equivalente |
| Indice di intensità turistica                                                                                                                                                                   | 2.563     | 2.010    | 3.495     | 553      | -932     | -1.321         | 2020 | - | Per 1.000 abitanti          |
| Presenze in esercizi ricettivi open air, agriturismi e rifugi montani sul totale delle presenze in esercizi ricettivi                                                                           | 26,3      | 19,6     | 22,6      | 6,7      | 3,7      | 3              | 2020 | + | Valori percentuali          |
| <b>Totale indicatori confrontabili</b>                                                                                                                                                          | <b>19</b> | <b>8</b> | <b>11</b> | <b>1</b> | <b>7</b> | <b>8 su 16</b> |      |   |                             |



### Goal 13: Take urgent action to combat climate change and its impacts

| INDICATORE                                                 | Puglia   | Mezzo    | Italia   | PvsM     | PvsIta   | Puglia vs Anno<br>precedente | Ult Anno P | Polarità | Unità di misura    |
|------------------------------------------------------------|----------|----------|----------|----------|----------|------------------------------|------------|----------|--------------------|
| Popolazione esposta al rischio di alluvioni                | 3,4      | 5,2      | 11,4     | -1,8     | -8       | 0,7                          | 2020       | -        | Valori percentuali |
| Popolazione esposta al rischio di frane                    | 1,5      | 3,2      | 2,2      | -1,7     | -0,7     | 0,2                          | 2020       | -        | Valori percentuali |
| Popolazione residente in aree di rischio alluvioni per kmq | 6,96     | 8,42     | 22,57    | -1,46    | -15,61   | 1,44                         | 2020       | -        | Abitanti per kmq   |
| Popolazione residente in aree di rischio frane per kmq     | 2,95     | 5,28     | 4,24     | -2,33    | -1,29    | 0,16                         | 2020       | -        | Abitanti per kmq   |
| Impatto degli incendi boschivi                             | 1,8      | 3,9      | 1,8      | -2,1     | 0        | 0,4                          | 2020       | -        | Per 1.000 kmq      |
| Preoccupazione per i cambiamenti climatici                 | 64,5     | 67,3     | 70       | -2,8     | -5,5     | -4                           | 2020       | -        | Valori percentuali |
| <b>Totale indicatori confrontabili</b>                     | <b>6</b> | <b>6</b> | <b>6</b> | <b>6</b> | <b>5</b> | <b>1 su 6</b>                |            |          |                    |



### Goal 14 - Conserve and sustainably use the oceans, seas and marine resources for sustainable development

| INDICATORE                                                                                                                                                                                                                                                                                                            | Puglia   | Mezzo    | Italia   | Pvsm     | PvsIta   | Puglia vs Annopr<br>e | Ult Anno P | Polarità | Unità di misura    |
|-----------------------------------------------------------------------------------------------------------------------------------------------------------------------------------------------------------------------------------------------------------------------------------------------------------------------|----------|----------|----------|----------|----------|-----------------------|------------|----------|--------------------|
| Rifiuti marini spiaggiati                                                                                                                                                                                                                                                                                             | 387      |          |          |          |          | 22                    | 2020       | -        | N.                 |
| Coste marine balneabili                                                                                                                                                                                                                                                                                               | 74,7     | 65,8     | 65,5     | 8,9      | 9,2      | 0                     | 2019       | +        | Valori percentuali |
| Aree marine protette EUAP                                                                                                                                                                                                                                                                                             | 203,5    |          |          |          |          |                       | 2019       | +        | Km2                |
| Aree marine comprese nella rete Natura 2000 (Il calcolo delle superfici è stato effettuato attribuendo a ciascuna regione la parte di sito effettivamente ricadente nel proprio territorio. L'estensione dei siti Natura 2000 per regione sono stati calcolati escludendo le sovrapposizioni fra i Sic-Zsc e le Zps.) | 3.344    |          |          |          |          | 2.541                 | 2020       | +        | Km2                |
| <b>Totale indicatori confrontabili</b>                                                                                                                                                                                                                                                                                | <b>4</b> | <b>1</b> | <b>1</b> | <b>1</b> | <b>1</b> | <b>1 su 3</b>         |            |          |                    |



**Goal 15 - Protect, restore and promote sustainable use of terrestrial ecosystems, sustainably manage forests, combat desertification, and halt and reverse land degradation and halt biodiversity loss**

| INDICATORE                                              | Puglia   | Mezzo    | Italia   | PvSM     | PvsIta   | PugliavsAnno<br>pre | Ult Anno P | Polarità | Unità di<br>misura |
|---------------------------------------------------------|----------|----------|----------|----------|----------|---------------------|------------|----------|--------------------|
| Aree forestali in rapporto alla superficie terrestre    | 7,9      | 22,8     | 30,8     | -14,9    | -22,9    |                     | 2015       | +        | valori percentuali |
| Coefficiente di boscosità                               | 9,7      | 32,4     | 36,8     | -22,7    | -27,1    |                     | 2015       | +        | valori percentuali |
| Aree protette                                           | 24,5     | 25,2     | 21,6     | -0,7     | 2,9      | 0                   | 2017       | +        | valori percentuali |
| Impermeabilizzazione del suolo da copertura artificiale | 8,15     | 5,88     | 7,11     | 2,27     | 1,04     | 0,03                | 2020       | -        | valori percentuali |
| Frammentazione del territorio naturale e agricolo       | 67       | 43,3     | 44,4     | 23,7     | 22,6     | 0,3                 | 2020       | -        | Valori percentuali |
| Indice di copertura vegetale montana                    | 97,3     | 94       | 88,8     | 3,3      | 8,5      | 0,6                 | 2020       | +        | valori percentuali |
| <b>Totale indicatori confrontabili</b>                  | <b>6</b> | <b>6</b> | <b>6</b> | <b>1</b> | <b>2</b> | <b>0 su 6</b>       |            |          |                    |



**Goal 16 - Promote peaceful and inclusive societies for sustainable development, provide access to justice for all and build effective, accountable and inclusive institutions at all levels**

| INDICATORE                                                                                                                 | Puglia | Mezzo | Italia | PvsM | PvsIta | Puglia vs Ann<br>opre | Ult Anno P | Polarità | Unità di<br>misura   |
|----------------------------------------------------------------------------------------------------------------------------|--------|-------|--------|------|--------|-----------------------|------------|----------|----------------------|
| Omicidi volontari                                                                                                          | 0,6    | 0,6   | 0,5    | 0    | 0,1    | -0,1                  | 2020       | -        | Per 100.000 abitanti |
| Percezione di sicurezza camminando da soli quando è buio                                                                   | 61,8   | 61,3  | 61,4   | 0,5  | 0,4    | 0,8                   | 2020       | +        | Valori percentuali   |
| Percentuale di detenuti adulti in attesa di primo giudizio sul totale dei detenuti adulti                                  | 19     | 17,4  | 16,3   | 1,6  | 2,7    | -2                    | 2020       | -        | Valori percentuali   |
| Affollamento degli istituti di pena                                                                                        | 129,3  | 101,7 | 106,5  | 27,6 | 22,8   | -1                    | 2021       | -        | Valori percentuali   |
| Famiglie che hanno ricevuto richieste di denaro, favori o altro in cambio di facilitazioni o servizi negli ultimi 12 mesi  | 1,1    |       | 1,2    |      | -0,1   |                       | 2016       | -        | Valori percentuali   |
| Famiglie che hanno ricevuto richieste di denaro, favori o altro in cambio di facilitazioni o servizi negli ultimi tre anni | 4,9    |       | 2,7    |      | 2,2    |                       | 2016       | -        | Valori percentuali   |
| Famiglie che hanno ricevuto richieste di denaro, favori o altro in cambio di facilitazioni o servizi nel corso della vita  | 11     |       | 7,9    |      | 3,1    |                       | 2016       | -        | Valori percentuali   |
| Fiducia nel sistema giudiziario                                                                                            | 4,9    | 4,9   | 4,8    | 0    | 0,1    | -0,1                  | 2020       | +        | Valore medio         |
| Fiducia nelle Forze dell'ordine e nei Vigili del fuoco                                                                     | 7,4    | 7,3   | 7,5    | 0,1  | -0,1   | -0,1                  | 2020       | +        | Valore medio         |
| Difficoltà di accesso ad alcuni servizi                                                                                    | 8,8    | 9,2   | 6,2    | -0,4 | 2,6    | -0,7                  | 2019       | -        | Valori percentuali   |
| Durata dei procedimenti civili                                                                                             | 572    | 584   | 419    | -12  | 153    | -55                   | 2020       | -        | In giorni            |
| Donne e rappresentanza politica in Parlamento                                                                              | 41,3   | 37,4  | 35,4   | 3,9  | 5,9    | 21,9                  | 2018       | +        | Valori percentuali   |

|                                                 |           |           |           |          |          |               |      |   |                    |
|-------------------------------------------------|-----------|-----------|-----------|----------|----------|---------------|------|---|--------------------|
| Giovani e rappresentanza politica in Parlamento | 52,4      | 49,7      | 42,2      | 2,7      | 10,2     |               | 2018 | + | Valori percentuali |
| <b>Totale indicatori confrontabili</b>          | <b>13</b> | <b>10</b> | <b>13</b> | <b>6</b> | <b>5</b> | <b>7 su 9</b> |      |   |                    |





## Goal 17 - Strengthen the means of implementation and revitalize the global partnership for sustainable development

| INDICATORE                                                                                           | Puglia   | Mezzo    | Italia   | PvSM     | PvsIta   | PugliavsAnn<br>opre | Ult Anno P | Polarità | Unità di<br>misura                |
|------------------------------------------------------------------------------------------------------|----------|----------|----------|----------|----------|---------------------|------------|----------|-----------------------------------|
| <i>Rimesse verso l'estero degli immigrati in Italia</i>                                              | 232,7    |          |          |          |          | 32,5                | 2020       | +        | Milioni di euro (prezzi correnti) |
| <i>Rimesse verso l'estero degli immigrati in Italia</i>                                              | 3,4      |          |          |          |          |                     | 2020       | +        | Incidenza su Italia 100           |
| Famiglie con connessione a banda larga fissa e/o mobile                                              | 70,5     | 72,5     | 77,8     | -2       | -7,3     | 2,1                 | 2020       | +        | Valori percentuali                |
| Persone di 6 anni e più che hanno usato Internet negli ultimi 3 mesi                                 | 63,6     | 64,7     | 70,5     | -1,1     | -6,9     | 3,9                 | 2020       | +        | Valori percentuali                |
| Persone che hanno ordinato/acquistato beni o servizi per uso privato su internet negli ultimi 3 mesi | 23,3     | 22,3     | 31,4     | 1        | -8,1     | 3,5                 | 2020       | +        | Valori percentuali                |
| Persone che hanno effettuato operazioni bancarie on line (internet banking) negli ultimi 3 mesi      | 28,7     | 27,4     | 39,5     | 1,3      | -10,8    | 4,1                 | 2020       | +        | Valori percentuali                |
| <b>Totale indicatori confrontabili</b>                                                               | <b>6</b> | <b>4</b> | <b>4</b> | <b>2</b> | <b>0</b> | <b>5 su 5</b>       |            |          |                                   |